



## Table of Contents

### 1 Why Taiwan?

- 02 Why Taiwan
- 03 International Students' Perspectives/Reasons

### 2 Getting to Know Taiwan

- 05 Fascinating Taiwan
- 07 History
- 07 Geography
- 07 Climate
- 08 Culture
- 08 Cuisine

### 3 Studying in Taiwan

- 10 Taiwan's Education System
- 12 Choosing Where to Study & Applying
- 16 International Programs
- 26 Visa & Arrival Information
- 28 Scholarships

### 4 Living in Taiwan

- 33 Accommodation
- 33 Living Costs
- 34 Services
- 34 Job Opportunities
- 36 Taiwan Hostfamily Program

### 5 Additional Information

- 38 Useful Links
- 42 Chinese Language Centers
- 44 Test of Chinese as a Foreign Language (TOCFL)

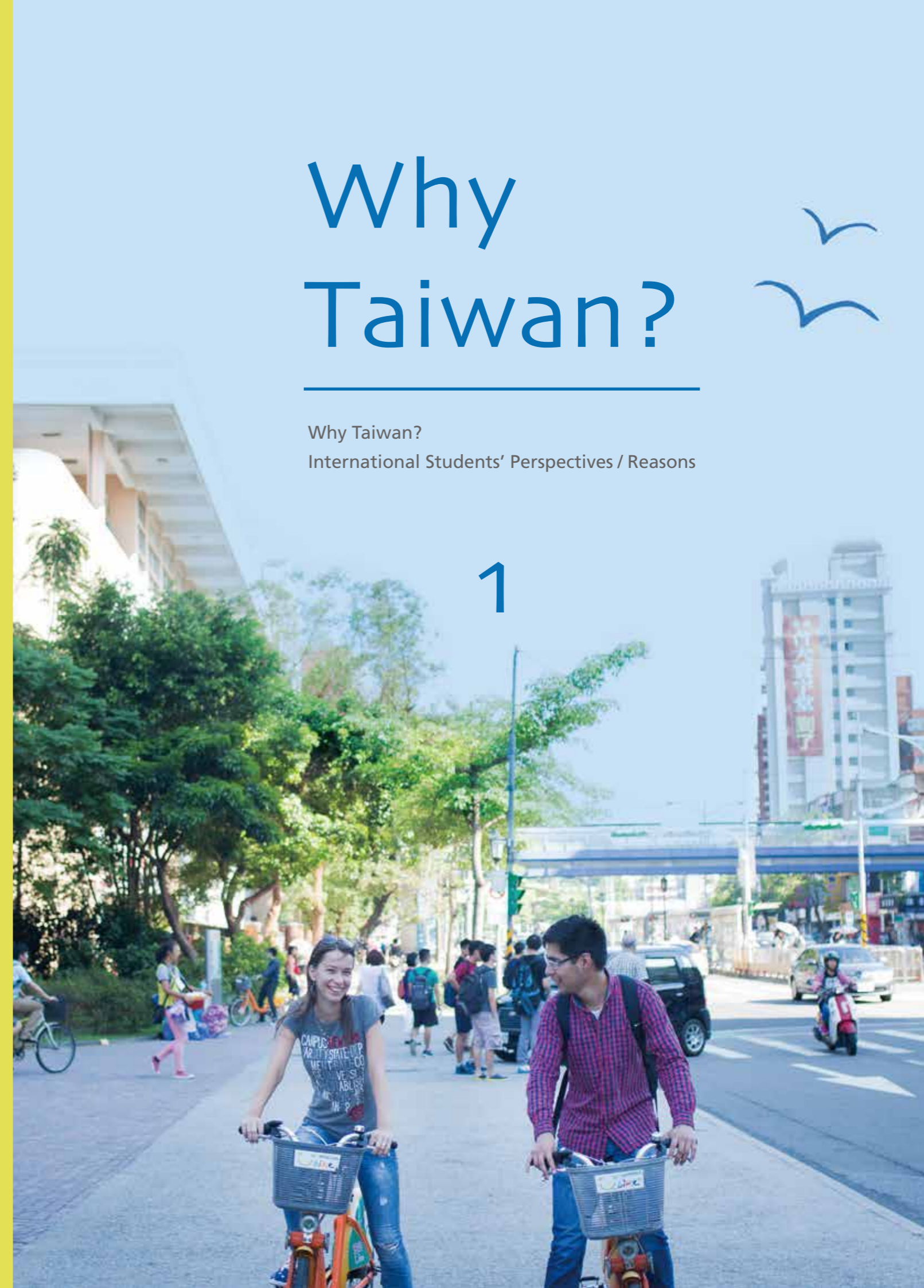
# Why Taiwan?



Why Taiwan?

International Students' Perspectives / Reasons

1



# Why Taiwan?

Taiwan has an outstanding higher education system that provides opportunities for international students to study a wide variety of subjects, ranging from Chinese language and history to tropical agriculture and forestry, genetic engineering, business, semi-conductors, and more. Chinese culture holds education and scholarship in high regard, and nowhere is this truer than in Taiwan. In Taiwan you will experience a vibrant, modern society rooted in one of world's most venerable cultures, and populated by some of the most friendly and hospitable people on the planet. A great education can lead to a great future. What are you waiting for? Come to Taiwan and fulfill your dreams.



Luis Valenzuela



Thailand

National Dong Hua University

Taiwan offers me three things that I will never forget: an excellent environment, a professional education, and an international connection.



El Salvador

National Taiwan Ocean University

I made a list of what the perfect place included: International recognition of my studies; affordable and reasonable living cost; a country with a diverse and fascinating culture; a gateway for culinary and traveling experiences; where I can learn a new language; where the technology is always ahead; and more important, a place where education equals fun. After careful research and some advice from my parents, Taiwan stood out for the things on the list.



Ravikan Nonkhuntod

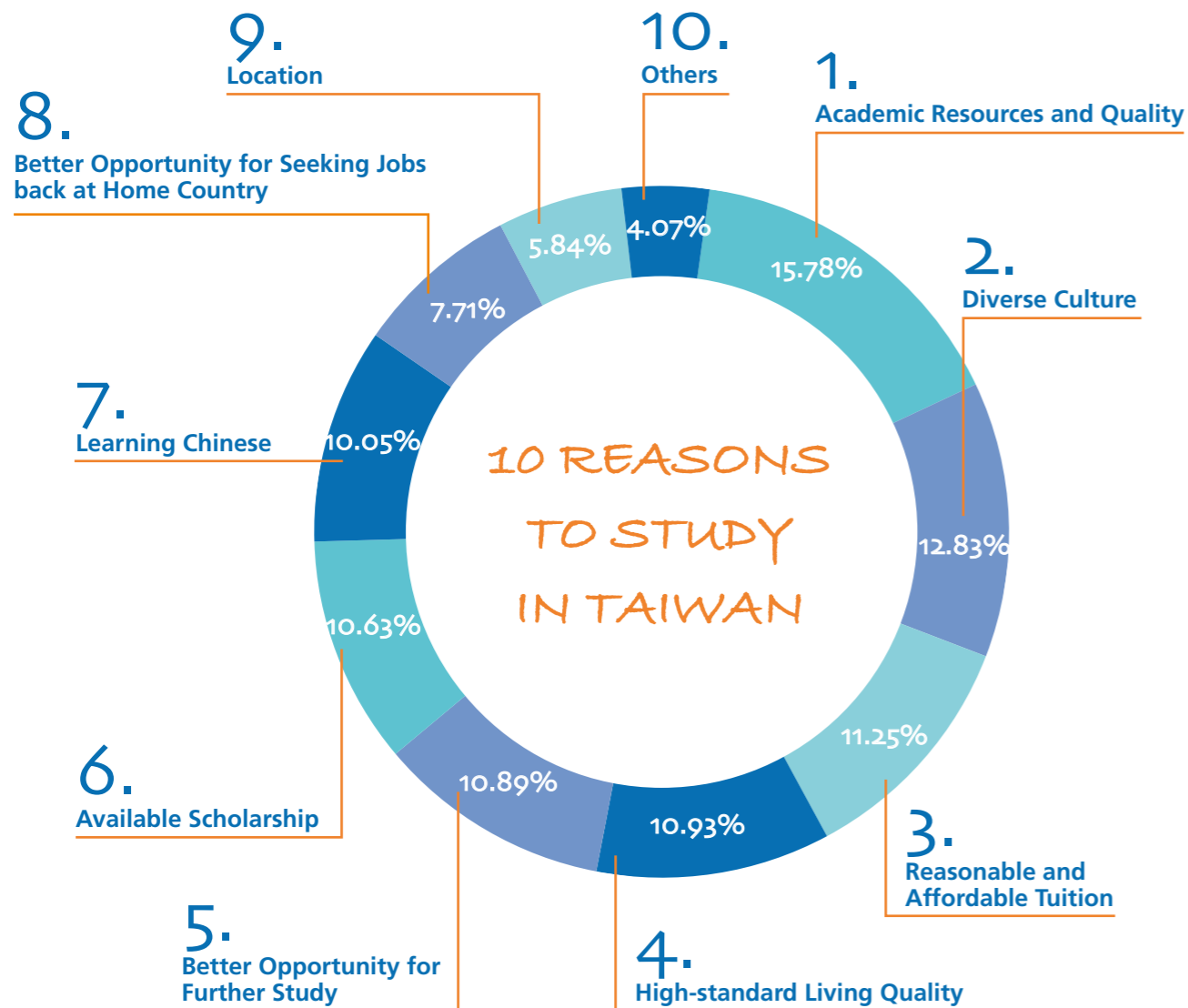
Stephen Downing



U.S.A

National Chiao Tung University

Taiwan is incredibly accommodating and welcoming to foreign students, regardless of Chinese language experience. Taiwan is a beautiful island full of amazing scenery and opportunities for adventure.



# The Reasons Why I Chose Taiwan

Let's see what international students say when asked "Why Taiwan?"

# Getting to Know Taiwan

Fascinating Taiwan

History

Geography

Climate

Culture

Cuisine

## 2



## Fascinating Taiwan

*We welcome you to our friendly island paradise!*



Taiwan is a modern, free, democratic society whose people are hardworking, fun-loving, educated, and friendly. While eagerly embracing the future, the people of Taiwan hold onto traditional values and ideals. The family, including ancestors, is of utmost importance; and education and scholarship are held in high esteem. Traditional forms of writing, architecture and art are part of everyday life. Yes, the ancient and modern, traditional and new are seamlessly woven together in Taiwan, creating a fascinating, dynamic society like no other in the world.

**The “beautiful Formosa” you’ll be exploring ... have you ever wondered what it’s like? Our rankings tell the story!**

### Economic Competitiveness

- 11<sup>th</sup> in the World Competitiveness Yearbook Rankings (IMD, 2015)
- 14<sup>th</sup> in the Global Competitiveness, World Economic Forum (WEF, 2014-2015)
- 11<sup>th</sup> in the Doing Business 2016 (World Bank, 2015)
- 13<sup>th</sup> (1<sup>st</sup> in Asia) in the Knowledge Economy Index (World Bank, 2012)
- 8<sup>th</sup> (1<sup>st</sup> in Asia) for Education in the Knowledge Economic Index (World Bank, 2012)

### Traveling and Environment

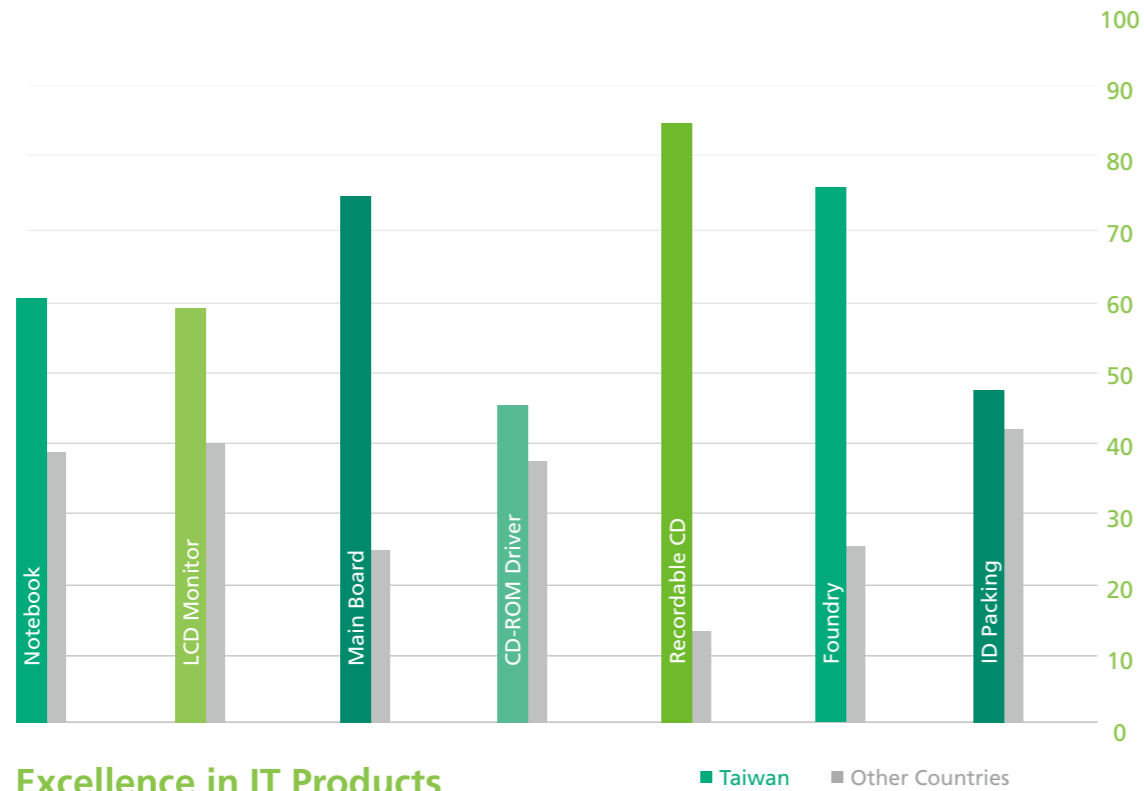
- 2<sup>nd</sup> safest country (based on crime statistics from the U.S. FBI)
- The first place in the world to offer free wireless internet access on a large scale to tourists (The Telegraph, 2013)
- 11<sup>th</sup> among 52 Places to Go in 2014 (New York Times, 2014)
- Taipei is the 1<sup>st</sup> remarkable place for solo travel (out of 26) (BuzzFeed.com, 2014)

### Excellence in Higher Education

- 12 universities in the Top 100 Asian universities (2015 QS Asian university ranking)
- 11 universities in the Top 100 Asian universities (2015 Times Asian university ranking)
- 3 universities in the Top 100 universities under 50 years old ranking (2015 The Times Higher Education 100 Under 50 Rankings)

### Taipei ranked 23<sup>rd</sup> in QS Best Student Cities 2016

Taiwan’s universities have been steadily climbing and achieving greater global prominence in recent years, establishing Taipei City as one of Asia’s leading higher education hubs.



### Excellence in IT Products

Global Market Share (%)

# Taiwan, Republic of China



#### GEOGRAPHY

Location	Pacific Ocean, 120 km (74.6 miles) off the coast of mainland China
Territory Size	36,193 sq km (13,973.3 sq miles)
Highest Point	Yu Shan (3,952 m=12,965.9 ft)
Capital City	Taipei

#### DEMOGRAPHICS

Population	Approximately 23,000,000
Density	647 people per sq km
Ethnic Groups	Taiwan's population is predominantly: <ul style="list-style-type: none"> <li>■ Han Chinese comprising around 97%: <ol style="list-style-type: none"> <li>1. 70% Holo (or 'Hoklo') people, who historically originated in Fujian province</li> <li>2. 18% Hakka people, and</li> <li>3. 9% (8.72%) who arrived in 1949</li> </ol> </li> <li>■ Indigenous Peoples make up about 2% (2.28%)</li> <li>■ New immigrants, including non-ROC spouses from mainland China, and Southeast Asia, and others make up about 1%.</li> </ul> <p><i>For more details see:</i> <a href="http://www.ey.gov.tw/en/cp.aspx?n=5776024635D354A6">www.ey.gov.tw/en/cp.aspx?n=5776024635D354A6</a></p>

Official Language Mandarin

#### OTHER

Currency	New Taiwan Dollar (NTD)
Electricity	Electrical current is 110 volts, 60 cycles, AC
Drive On	Traffic drives on the right
Calling Code	+886
Time Zone	UTC+8



## History

The name "Taiwan", meaning "terraced bay", was first used in 1430 by Admiral Cheng Ho of the Ming court. The Portuguese named the island "Ilha Formosa" meaning "Beautiful Island" in the 16th century, and the name "Formosa" was used until the end of WWII in 1945.

Situated between northern and southern Asia, Taiwan has long played a crucial role in trade and politics. Taiwan's location brought frequent invasions, but it also provided the conditions for Taiwan to become a modern, prosperous and democratic country.

## Geography

Taiwan lies along the western edge of the Pacific Ocean, 193 km (120 miles) off the southeastern coast of mainland China. Taiwan has a land area of about 36,000 square km (14,400 square miles) and is nearly bisected by the Tropic of Cancer. Taiwanese people say their island is shaped like a sweet potato, a popular food there.

Taiwan has broad plains, with rolling hills along its coasts, and precipitous mountains form the spine of the island. There are six peaks over 3,500m—the highest is Yu Shan at 3,952m—and more than 200 peaks over 3,000m. Swift rivers have carved steep gorges through the mountains. Taroko Gorge, with its vertical rock walls hundreds of meters high, is a wonder of nature. Geothermal activity has produced many hot springs in the mountains.

Due to the abundant rainfall and generally warm temperatures, vegetation grows rampantly in Taiwan, from lowland agricultural crops to all manner of plant life cloaking the hills and mountains. Its unique climate and geography have given Taiwan a tremendously diverse range of flora and fauna, and many species are endemic to the island.

## Climate

In subtropical northern Taiwan, the average temperature during the cool, mild winters is 18°C/64°F, and the average temperature rises to 31°C/88°F during the hot, humid summers. Southern Taiwan has a tropical, marine climate with generally warm and relatively dry weather.

Temperate conditions prevail in the mountain areas. Snow may accumulate on some of the highest peaks, such as Yu Shan and Ho-Huan Shan. Rain may fall at any time, but the greatest rainfalls usually occur from April to August. The typhoon season is from May to September.

## Culture

The culture of Taiwan is a blend of modern and traditional, national and international, unique and universal. The influences of Taiwan's complex political history, its indigenous peoples' culture, Confucianism, Japan, and Western civilization can all be seen at the same time.

The Japanese occupation of Taiwan from 1895 to 1945 influenced the language, culture, and architecture. Visitors can still find a Japanese-style mansion and hear old Japanese songs emanating from nearby taverns in the Beitou area.

Taiwan's aboriginal cultures are unique and started to flourish when the Ami people's chant "Jubilant Drinking Song" was sampled in a song used to promote the 1996 Olympics. But the dominant culture in Taiwan is still Chinese. Immigrants from mainland China, especially those who arrived in 1949 after the civil war, brought Confucianism and Chinese culture to Taiwan. Visitors will see ornate temples and traditional Chinese characters throughout Taiwan. The National Palace Museum has an outstanding collection of 650,000 pieces of ancient Chinese artifacts brought from the Forbidden City, making it a major attraction for visitors.

## Cuisine

In Taiwan, it seems that people live to eat! There are snack shops and restaurants located within convenient walking distance in every town and city. Foods and dishes from around the world are available in Taiwan, but Taiwan's native cuisine is unforgettable and has now gained worldwide attention - try it just once and you'll remember it forever. Memorable dishes include: pearl milk tea, Danzai noodles, shrimp pork soup, oyster omelet, meat rice tamales, stinky tofu, Taiwanese meatballs, coffin sandwiches, veggie and meat wraps, oyster vermicelli, steamed sandwiches, and crushed ice desserts.



# Studying in Taiwan

Taiwan's Education System  
 Choosing Where to Study & Applying  
 International Programs  
 Visa & Arrival Information  
 Scholarships

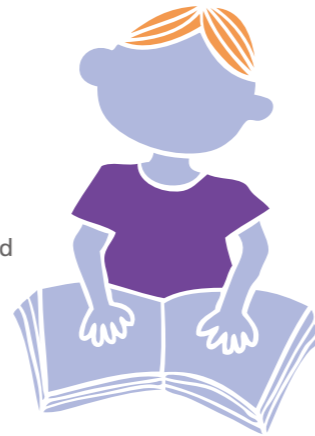
# 3



# Taiwan's Education System

## Overview

The people of Taiwan are very well educated, literacy is about 98.39%, and students from Taiwan score very high on international tests. These achievements are the product of cultural and societal values that hold education in high esteem, and the comprehensive education system created to achieve Taiwan's goal of becoming a well-educated, economic and technological powerhouse on the world stage. Under the current education system, after preschool students may study for up to 20 years: 6 years of primary education, 3 years of junior high school, 3 years of senior secondary school, 4 to 7 years of college or university, 2 to 4 years for a master's degree, and 2 to 7 years for a doctoral degree.



## Basic Education

Students in Taiwan have 12 years of basic education: comprising 6 years of elementary school, 3 years of junior high school, and 3 years of senior high school or vocational high school. Students usually start first grade at age six. The first two stages of basic education, elementary and junior secondary school education, are compulsory.

## Senior High Schools and Vocational High Schools

After completing junior high school, students continuing on to senior secondary school take exams to qualify for a school. There are two types of senior secondary level schools: senior high schools and vocational high schools. Both take 3 years to complete.

## Specialized Training

Specialized training beyond the secondary level is provided by 5-year junior colleges which focus on applied sciences and technology. These accept students directly after junior high school.

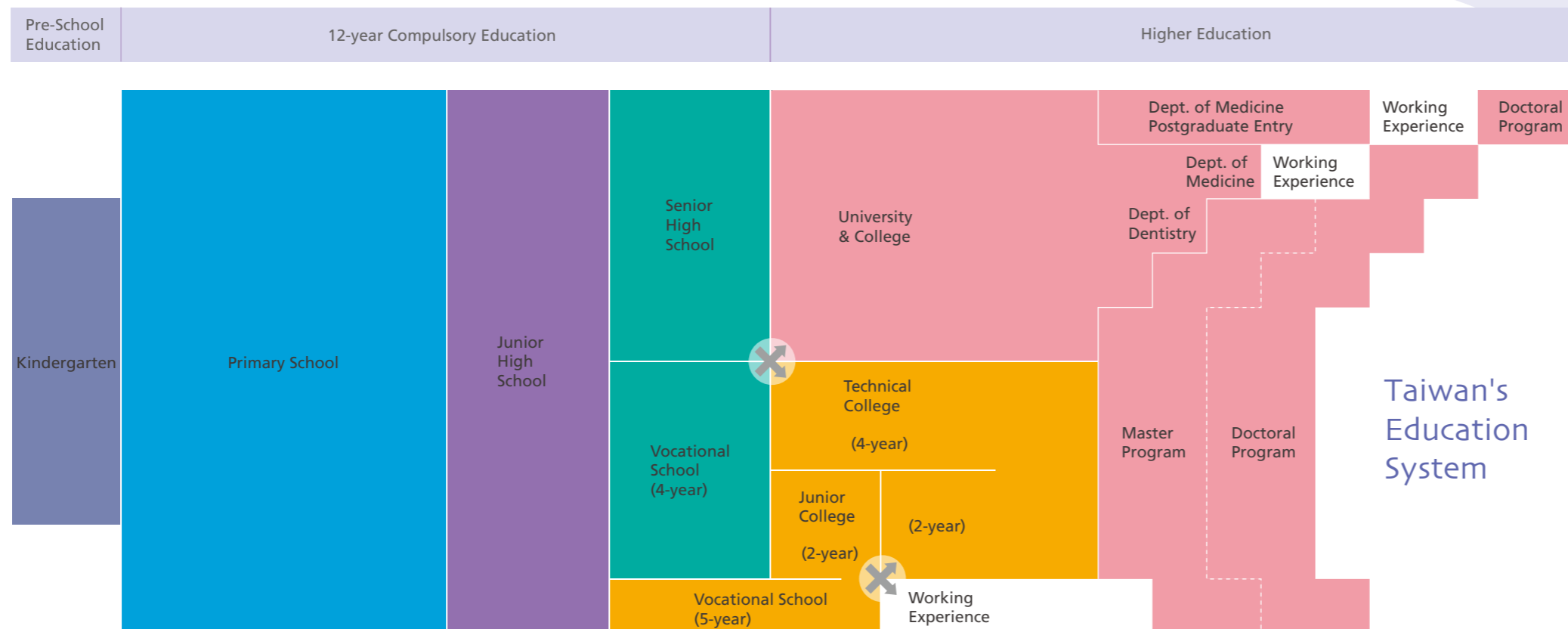
## Higher Education

Higher education in Taiwan is separately provided by 2-year junior colleges, 5-year junior colleges, technical colleges, liberal arts colleges, universities, and institutes offering graduate programs.

Most university undergraduate programs take 4 years to complete. Some specialized undergraduate programs, such as dentistry (6 years) and medicine (7 years), take longer to complete. Extensions of up to 2 years may be granted to students who are unable to fulfill the program requirements within the designated time.

Universities and colleges in Taiwan offer a wide variety of master's and doctoral degree programs. Graduate programs leading to a master's degree take 2 to 4 years to complete, while doctoral degree programs take 2 to 7 years. A student who enters graduate school as part of on-the-job training and fails to finish the required coursework or complete a thesis within the expected time may be granted an extension.

Number of universities in Taiwan: 158  
(51 public; 107 private)  
List of Universities in Taiwan:  
[www.studyintaiwan.org/universities.html](http://www.studyintaiwan.org/universities.html)



Taiwan's Education System

	Pre-School Education			12-year Compulsory Education												Tech. & Col. Education												
Age	4	5	6	7	8	9	10	11	12	13	14	15	16	17	18	19	20	21	22	23	24	25	26	27	28	29	30	
Grade															University			Master's Degree Courses			Doctoral Degree Courses							



**NOTE**  
In most higher education institutions in Taiwan the academic year begins in August/September and finishes in August the following year. The academic year has 2 semesters: the first semester is from August to early the following year, usually January (depending on the date of Chinese New Year), and the second semester is usually begins in February, and ends in July. There are 2 holiday seasons: the winter vacation, January-February, and the summer vacation, July-August.

# Choosing Where to Study & Applying

## Choosing a College or University

The curriculum at most universities focuses on academic studies and research. Universities of technology focus on practical and specific skills training. A wide range of colleges and universities welcome international applicants. Applicants can choose one based on their personal interests and the courses offered. A list of universities and colleges, both public and private, can be found at the website "Study in Taiwan" ([www.studyintaiwan.org](http://www.studyintaiwan.org))



## Graduate Schools

Students are awarded a master's degree upon completion of their postgraduate study. A master's degree program usually requires 2 to 4 years of study; and a doctorate program (PhD) requires 2 to 7 years of study.

### Eligibility Requirements for Admission

- Master's Program
  1. Graduation from an undergraduate program or equivalent
  2. Pass the master's degree program entrance examination
- Ph.D. Program
  1. Graduation from master's program or equivalent
  2. Pass the Ph.D. entrance examination

### Documents for Submission

- Application forms
- Photocopies of original graduation diploma (if the original is not in English or Chinese, an English or Chinese translation must be provided)
- Financial statement
- Statement of purpose
- Letters of recommendation
- Application fee
- Other documents required by the college, university, or institute

### Graduation and Completion Requirement

- Master's Program
  1. Earn required credits, produce a thesis, and pass a final examination
  2. For master's degree programs in the arts, applied sciences and technology, the thesis may be replaced by an exhibition or performance plus a written or technical report
- Ph.D. Program
 

Earn required credits, pass the Ph.D. candidate qualification exam, produce a dissertation, and pass the oral examination

## Universities and Colleges

University undergraduate programs usually require four years to complete; but students who are unable to fulfill their requirements within the designated time may be granted an extension of up to two years. Specialized undergraduate programs such as dentistry and medicine require six to seven years, including an internship of one year.

### Admission Requirements

Graduation from senior secondary (high) school or equivalent

### Documents for Submission

- Photocopies of the original graduation diploma (if the original is not in English or Chinese, an English or Chinese translation must be provided)
- Financial statement
- Statement of purpose
- Letters of recommendation
- Application fee
- Other documents required by the university or college

### Graduation and Completion Requirement

Earn at least 128 credits

### Tuition

Students who intend to study in Taiwan should note that tuition fees at colleges and universities vary. The tuition fee may also vary from program to program within a university. The following is a brief summary of tuition fees in 2015:

Degree	Tuition Fee (per semester)
Bachelor's	NTD\$45,000–\$54,000 (about USD \$1,400–\$1,690)
Master's	NTD\$48,000–\$60,000 (about USD\$ 1,500–\$1,875)

\*(USD\$1 ≙ NTD\$32)

### Procedure

- 1 Make sure you're eligible to apply as an international student.
- 2 Make sure you've done research about programs that interest you.
- 3 Make sure the program you intend to apply for is open to international students.
- 4 Make sure you're well aware of and meet all the requirements of individual colleges or universities.
- 5 Make sure you fill in the application form correctly and have all the required documents.
- 6 Make sure to send the application package in time.
- 7 Make sure you've received an admission letter. You'll need it to apply for a visa and registering.

*Choose Your University and Course*

Students applying for an undergraduate, graduate, or doctoral program can submit their application all year round. The deadline for first semester submissions varies from university to university, but it usually falls in March.

Study in Taiwan Website  
[www.studyintaiwan.org](http://www.studyintaiwan.org)

Ministry of Education, Taiwan  
[english.moe.gov.tw](http://english.moe.gov.tw)

## Choosing a Chinese Language Center

Taiwan is an ideal place for international students who want to learn Mandarin Chinese, also called Mandarin, Huayu, Guoyu, Hanyu, Putonghua, and Zhongwen in Chinese-speaking communities around the world, and Modern Standard Chinese. Taiwan is also an ideal place to learn to read and write Chinese characters, something that will enable you to communicate, in writing, with people who speak other Chinese dialects. The traditional character forms are still used in Taiwan. Learning these is essential for any student who plans to become a translator and they allow you to more fully appreciate the Chinese language, across the centuries.

There are 45 Chinese Language Centers located at colleges and universities throughout Taiwan, offering classes year-round. These learning centers provide a variety of courses for students of all levels of proficiency. The instruction and teaching materials are top-notch and designed to help students achieve their language goals. Outside of class, students will have innumerable opportunities to practice reading Chinese characters and speaking Mandarin with the friendly citizens of Taiwan. Imagine being able to practice what you've just learned with native speakers on campus, in coffee shops, convenience stores or dance clubs! With its wonderful blend of tradition and modernity, Taiwan truly is an ideal place to learn Mandarin!

See P.42~P.43 for the locations and websites of Chinese Language Centers



### Tuition

45 Chinese Language Centers in Taiwan provide various types of courses, and the tuition fees charged by each center vary. The general range is set out below:

#### General Courses

**Total hours** 180 hours or more  
**Tuition fee** NTD\$18,300-\$43,500  
 (about USD\$570-\$1,360)

#### Intensive Summer Courses

**Total hours** 80~240 hours  
**Tuition fee** NTD\$12,000-\$65,000  
 (about USD\$375-\$2,030)

\*(USD\$1 = NTD\$32)

### Procedure

- 1 Decide which Chinese Language Center you would like to apply to.
- 2 Determine the cost of studying at the Chinese Language Center you're most interested in.
- 3 Check when applications are due and make sure the period of instruction fits your schedule.
- 4 Complete your application.
- 5 If you are accepted, you will receive a formal letter of admission.

## Application

Please note: each institution has its own requirements and standards to determine whether applicants are qualified for admission. Students must show proof that they have medical and personal accident insurance, or National Health Insurance cover, at the time of registration.

### Documents to be Submitted

- A completed application form
- A copy of your passport
- An original copy of your personal financial statement, valid within the last 6 months. Each learning center will specify the required details.
- Diploma/admission letter (varies from center to center)
- Research proposal (varies from center to center)
- Photos (check the website of each learning center for details)
- Insurance certificate
- Application fee

### NOTE

Students who want to apply for a Chinese language learning course can submit their application all year round. There are usually four terms offering courses: spring, summer, fall and winter.



# International Programs

Many EMI (English as the medium of instruction) courses are offered by universities. The list below shows the international programs that have over 90% of the lessons are taught in English.



## University

<b>Asia University</b>	MA   International Master of Business Administration
	BA   Joint Degree Undergraduate Program in Department of Finance
	MA   PHD   Master & Ph.D. Programs in Department of Bioinformatics and Medical Engineering
	MA   PHD   Master & Ph.D. Programs in Department of Computer Science and Information Engineering
	MA   PHD   Master & Ph.D. Programs in Department of Healthcare Administration
	MA   Master Program in Department of Biotechnology
	MA   Master Program in Department of Psychology
	PHD   Ph.D. Program in Department of Business Administration
	BA   Undergraduate Program of International Finance and Management
	<b>Chang Gung University</b>
PHD   Graduate Institute of Biomedical Sciences, Division of Biotechnology	
MMS   Graduate Institute of Dental and Craniofacial Science	
MS   Graduate Program in Molecular Medicine for Master's Degree	
MBA   School of Business (MBA)	
<b>Chang Jung Christian University</b>	BA   Bachelor Degree of International Finance and Business Management
	MA   Graduate School of Business and Operations Management
	MA   Master Program of International Business
<b>China Medical University</b>	MA   PHD   Department of Biological Science & Technology
	MA   PHD   Department of Nutrition
	MA   Graduate Institute of Acupuncture Science- International Master Program
	MA   International Master Program of Biomedical Sciences
	MA   International Public Health Program
<b>Chinese Culture University</b>	MA   Department and Graduate Institute of English Language & Literature
	MA   Department of Western Music
	BA   MA   English Program of Global Business
	MA   Graduate Institute of Earth Science / Atmospheric Science
	MA   International English-Teaching Master Program in China Studies
<b>Chung Yuan Christian University</b>	MA   Applied Linguistics and Language Studies
	MSC   PHD   Biomedical Material and Technology
	MSC   Bioscience Technology

<b>Feng Chia University</b>	MSC   PHD   Chemical Engineering and Materials	
	MSC   PHD   Chemistry and Material Chemistry	
	MSC   PHD   Civil Engineering	
	MSC   PHD   Electrical Engineering	
	MSC   PHD   Environment Engineering	
	MSC   PHD   Industrial and System Engineering	
	MSC   Information Technology and Cloud Computing	
	MA   International Master Program of Business Management	
	MSC   PHD   Mechanical Engineering	
	MSC   Membrane Material and Application	
	MSC   PHD   Microelectronic Engineering and Applications	
	MSC   PHD   Nanotechnology	
	MSC   PHD   Optomechanics	
	MSC   PHD   Physics	
	PHD   PhD Program in Business	
	MA   Teaching Chinese as a second Language	
	<b>Fu Jen Catholic University</b>	BBA   Bachelor of International Business Administration (English Program)
		MBA   Department of International Business
PHD   Department of Statistics		
BBA   Dual-Degree Bachelor's Program in Business and Innovation		
MBA   Dual-Degree Master's Program in Logistics and Entrepreneurship		
MBA   Master's Program of International Business Administration (IMBA)		
<b>I-Shou University</b>	MA   Department of English Language and Literature	
	PHD   Graduate Institute of Applied Science and Engineering	
	MA   MA Program in Brand and Fashion Management	
	MBA   MBA Program in International Management ( imMBA)	
<b>Kainan University</b>	BA   Entertainment Management, EM	
	BA   International Business Administration, IBA	
	BA   International Finance, IF	
	BA   International Tourism & Hospitality, ITH	
	MBA   International Master of Business Administration, IMBA	
<b>Kaohsiung Medical University</b>	PHD   Department of Medical Laboratory Science and Biotechnology	
	PHD   PhD Program in Translational Medicine	
<b>Ming Chuan University</b>	BS   Applied Computing Program	
	BA   MA   Applied English	
	BS   Fashion and Innovation Management Program	
	MBA   Graduate School of International Business	
	MBA   Graduate School of Business Administration	
	MA   Graduate School of International Affairs	
	BA   International Affairs and Diplomacy Program	
	BBA   International Business & Trade Program	
BA   Journalism & Mass Communication Program BA		
BBA   Travel & Tourism Program		

**National Central University**

MS   PHD   Department of Atmospheric Sciences
MS   PHD   Department of Biomedical Sciences and Engineering
MS   PHD   Department of Business Administration
MS   PHD   Department of Chemical & Materials Engineering
PHD   Department of Chemistry
MS   PHD   Department of Civil Engineering
MS   PHD   Department of Communication Engineering
MS   PHD   Department of Computer Science & Information Engineering
MS   PHD   Department of Earth Sciences
MS   PHD   Department of Electrical Engineering
MA   Department of English
MS   PHD   Department of Life Science
MS   PHD   Department of Mechanical Engineering
MS   PHD   Department of Optics and Photonics
MS   PHD   Department of Physics
MS   PHD   Graduate Institute of Applied Geology
MS   PHD   Graduate Institute of Astronomy
MS   PHD   Graduate Institute of Cognitive Neuroscience
MS   PHD   Graduate Institute of Construction Engineering & Management
MS   PHD   Graduate Institute of Energy
MS   PHD   Graduate Institute of Environmental Engineering
MS   PHD   Graduate Institute of Human Resource Management
MS   PHD   Graduate Institute of Hydrological & Oceanic Sciences
MS   PHD   Graduate Institute of Industrial Management
MS   PHD   Graduate Institute of Materials Science & Engineering
MS   PHD   Graduate Institute of Network Learning Technology
MS   PHD   Graduate Institute of Space Science
PHD   Interdisciplinary Neuroscience Ph.D. Degree Program (University System of Taiwan)
MS   International Master Degree Program in Applied Material Science
MS   International Master Program for Environment Sustainable Development
MA   International Master's Program in Inter-Asia Cultural Studies (University System of Taiwan)
PHD   International Graduate Program for Photonics (University System of Taiwan)
PHD   International PhD Program for Environmental Science Technology (University System of Taiwan)
MS   Master of Science Program in Remote Sensing Science and Technology
MS   PHD   Program in Biophysics, Department of Physics
MS   PHD   Program in Opto-mechatronics Engineering

**National Cheng Kung University**

MA   PHD   Department of Aeronautics & Astronautics
MA   PHD   Department of Civil Engineering
MA   PHD   Department of Computer Science & Information Engineering
MA   PHD   Department of Electrical Engineering
MA   PHD   Department of Environmental Engineering
MA   PHD   Department of Foreign Languages & Literature
MA   PHD   Department of Geomatics
MA   PHD   Department of Hydraulic & Ocean Engineering
MA   PHD   Department of Materials Science & Engineering
MA   Department of Nursing

MA   PHD   Department of Physics
PHD   Department of Resources Engineering
MA   PHD   Department of Systems & Naval Mechatronic Engineering
PHD   Institute of Allied Health Science
MA   PHD   Institute of Bioinformatics & Biosignal Transduction
MA   PHD   Institute of Biotechnology
MA   PHD   Institute of Computer & Communication Engineering
MA   PHD   Institute of Creative Industries Design
MA   PHD   Institute of International Management
MA   PHD   Institute of Manufacturing Information & Systems
MA   PHD   Institute of Microelectronics
MA   Institute of Tropical Plant Sciences
BA   International Bachelor Degree Program on Energy
MA   International Master Program on Natural Hazards Mitigation and Management
MA   MS Degree Program on Nano-Integrated-Circuit Engineering
PHD   Nano-Micro Engineering Ph.D. Degree Program of the Department of Materials Science and Engineering
MA   The International Curriculum for Advanced Materials Program (iCAMP)

**National Chengchi University**

PHD   International Doctoral Program in Asia-Pacific Studies (IDAS)
MA   International Master of Business Administration Program (IMBA)
MA   International Master's Program in Applied Economics and Social Development (IMES)
MA   International Master's Program in Asia-Pacific Studies (IMAS)
MA   International Master's Program in International Communication Studies (IMICS)
MA   International Master's Program in International Studies (IMPIS)

**National Chiao Tung University**

MSC   PHD   Electrical Engineering and Computer Science International Graduate Program
MBA   Global MBA Program
MSC   PHD   Graduate Program of International College of Semiconductor Technology
MSC   International Master of Science Program for Interdisciplinary Molecular Science of Materials and Chemical Biology
PHD   International Ph.D. Program in Environmental Science and Technology (University of System of Taiwan)
PHD   International Ph.D. Program in Interdisciplinary Neuroscience (University System of Taiwan)
PHD   International Ph.D. Program in Photonics (University System of Taiwan)

**National Chiayi University**

MA   Global Master Program of Agricultural Science
MA   Global Master Program of Teaching Profession
MA   Global Master Program of Tourism and Management

**National Chung Cheng University**

MA   International Master Program in Global Finance
MA   Master of Science in Advanced Manufacturing System
MA   Master Program in Educational Leadership and Management Development
PHD   PhD Program in Cognitive Sciences

**National Chung Hsing University**

MA   PHD   Graduate Institute of Technology Management
BA   International Bachelor Program of Agribusiness, IBPA
MA   International Master Program of Agriculture, IMPA
PHD   International PhD Program in Taiwan and Transcultural Studies
PHD   TIGP- Molecular and Biological Agricultural Science Program, MBAS
MA   Tricontinental Master Program in Global Studies

**National Dong Hwa University**

MA   Asia-Pacific Area Studies
BBA   Bachelor Program of Management Science and Finance
MBA   PHD   Department of Business Administration
MS   PHD   Department of Chemistry
BS   MS   PHD   Department of Computer Science and Information Engineering
BS   Department of Counseling and Clinical Psychology
MA   PHD   Department of Economics
MED   PHD   Department of Education and Human Potentials Development
MS   PHD   Department of Electrical Engineering
BA   MA   Department of English
BBA   MBA   PHD   Department of Finance
MBA   PHD   Department of International Business
MBA   PHD   Department of Information Management
MS   PHD   Department of Life Science
MS   PHD   Department of Materials Science and Engineering
MS   PHD   Department of Natural Resources and Environmental Studies
MS   PHD   Department of Physics
MBA   PHD   Graduate Institute of Logistics Management
MS   Graduate Institute of Marine Biology
MS   Master of Humanity and Environmental Science Program

**National Hsinchu University of Education**

MA   Department of English Instruction
--

**National Kaohsiung Normal University**

MA   PHD   English Department
-------------------------------

**National Sun Yat-sen University**

MSS   International Master Program in Asia-Pacific Affairs
MS   International Master's Program in Electric Power Engineering
PHD   International PhD Program for Synchrotron Radiation and Neutron Beam Applications
MBA   International Business MBA Program
MBA   Global Human Resource Management English MBA Program
MS   Master's Program in Telecommunication Engineering

**National Taichung University of Education**

MA   International Master of Business Administration (IMBA)
---

**National Taipei University**

MA   Global Master of Business Administration, GMBA
MA   International Program on Urban Governance

**National Taipei University of Education**

MA   MA in Critical and Curatorial Studies of Contemporary Art
--

**National Taiwan Normal University**

MA   PHD   Chemistry
MA   PHD   Earth Sciences
MA   PHD   Electro-optical Science and Technology
MA   PHD   English
MA   European Cultures and Tourism
MA   PHD   Information & Computer Education
MA   International Human Resource Development
MA   PHD   Mathematics
BA   MA   PHD   Physics
PHD   Science Education

**National Taiwan Sport University**

MSc   MPE   Dual MSc & MPE Degrees Programme in International Sports Coaching Science
---

**National Taiwan University**

MA   PHD   Department of Agricultural Chemistry
MA   Department of Agricultural Economics, International Program
PHD   Department of Atmospheric Sciences
MA   PHD   Department of Bioenvironmental Systems Engineering
MA   PHD   Department of Chemical Engineering
MA   PHD   Department of Chemistry, Chemical Biology Division
MA   PHD   Department of Chemistry, Chemistry Division
MA   Department of Civil Engineering, Computer-Aided Engineering Division
MA   Department of Civil Engineering, Geotechnical Engineering Division
MA   Department of Civil Engineering, Structural Engineering Division
MA   Department of Civil Engineering, Transportation Engineering Division
MA   PHD   Department of Electrical Engineering
MA   PHD   Department of Forestry and Resource Conservation
PHD   Department of Geosciences
MA   Department of Geosciences, Applied Geology Division
MA   Department of Geosciences, Geology Division
MA   PHD   Department of Law
MA   PHD   Department of Life Science
MA   PHD   Department of Physical Therapy
PHD   Department of Physics
MA   PHD   Department of Plant Pathology and Microbiology
MA   Global MBA (GMBA)
MA   PHD   Graduate Institute of Applied Mechanics
PHD   Graduate Institute of Applied Physics
PHD   Graduate Institute of Astrophysics
MA   PHD   Graduate Institute of Biomedical Electronics and Bioinformatics
MA   PHD   Graduate Institute of Biomedical Engineering
MA   PHD   Graduate Institute of Biotechnology
MA   PHD   Graduate Institute of Communication Engineering
MA   PHD   Graduate Institute of Ecology and Evolutionary Biology
PHD   Graduate Institute of Environmental Health
PHD   Graduate Institute of Epidemiology and Preventive Medicine
MA   PHD   Graduate Institute of Fisheries Science
PHD   Graduate Institute of Health Policy and Management
MA   PHD   Graduate Institute of Industrial Engineering
PHD   Graduate Institute of Molecular Medicine
MA   PHD   Graduate Institute of Networking and Multimedia
MA   PHD   Graduate Institute of Occupational Medicine and Industrial Hygiene
PHD   Graduate Institute of Oceanography
MA   Graduate Institute of Oceanography, Chemical Oceanography Division
MA   Graduate Institute of Oceanography, Marine Biology and Fisheries Division
MA   Graduate Institute of Oceanography, Marine Geology and Geophysics Division
MA   Graduate Institute of Oceanography, Physical Oceanography Division
MA   PHD   Graduate Institute of Photonics and Optoelectronics
PHD   Graduate Institute of Plant Biology

<b>National Taiwan University</b>	PHD   Graduate Institute of Polymer Science and Engineering
	MA   PHD   Graduate Institute of Toxicology
	MA   Graduate Program in Translation and Interpretation, Interpreting Track
	MA   Graduate Program in Translation and Interpretation, Translation Track
<b>National Tsing Hua University</b>	BA   MA   PHD   Department of Materials Science Engineering
	MA   PHD   Department of Power Mechanical Engineering
	MA   PHD   Institute of Astronomy
	MA   PHD   Institute of Nanoengineering and Microsystems
	PHD   Institute of Service Science
	MA   PHD   Institute of Technology Management
	MA   International Master of Business Administration
	MA   International Master Program in Information Systems and Applications (ICDF)
	MA   International MBA Program in Technology Management (ICDF)
	PHD   International Ph.D. Program in Biomedical Engineering
	PHD   International Ph.D. Program in Information Systems and Applications (SNHCC)
	PHD   International Ph.D. Program in Low Carbon Energy
	MA   MA Program in Language Cognition and Teaching
	MA   MA Program in Western Literature
PHD   Taiwan International Graduate Program (TIGP), Nano Science and Technology Program	
<b>National United University</b>	MA   International Master Program of Intelligent Greentech
<b>National University of Kaohsiung</b>	MA   International Master of Business Administration
<b>National Yang-Ming University</b>	MA   PHD   Institute of Biophotonics
	PHD   Institute of Microbiology and Immunology
	MA   PHD   International Health Program
	PHD   International Ph.D. Program in Interdisciplinary Neuroscience (University System of Taiwan)
<b>Providence University</b>	PHD   International Ph.D. Program in Photonics
	BA   Bachelor of International Business Administration
	BA   Global Foreign Language Education Program
	MBA   Graduate International Programs
<b>Soochow University</b>	BA   MA   The Department of English Language, Literature and Linguistics
	MBA   Global Business Program
<b>Taipei National University of the Arts</b>	MA   International Master of the Arts Program in Cultural and Creative Industries, IMCCI

<b>Tamkang University</b>	BA   Bachelor's Program in Global Financial Management
	BA   Department of Diplomacy and International Relations
	BA   Department of English Language and Culture
	BA   Department of Global Politics and Economics
	BA   Department of International Tourism Management
	BA   Division of Applied Information, Department of Innovative Information and Technology
	BA   Division of Global Commerce, Department of International Business
	BA   Division of Software Engineering, Department of Innovative Information and Technology
	MA   Master's Program in Taiwan and Asia-Pacific Studies
	MA   Master's Program, Department of Computer Science and Information Engineering
<b>Tatung University</b>	MA   Master's Program in Business and Management
	MA   Analog Integrated Circuits
	MA   Cloud Computing Security
	MA   Digital Signal Processing
	BA   International Business
	BA   Internationalization Strategy
	BA   Organization and Management Theory
<b>Tzu Chi University</b>	MA   PHD   International Biomedical Graduate Program (IBGP)
<b>University of Taipei</b>	BA   MA   English Instruction
	MS   PHD   Sports Sciences
<b>Yuan Ze University</b>	BBA   Bachelor of Business Administration (English Program)
	PHD   Doctor of Philosophy Program, College of Management
	MBA   Master of Business Administration Program, College of Management
	MS   Master of Science (Financial Program and Accounting Program)



## Technological University

<b>Chaoyang University of Technology</b>	PHD   International PhD Program
<b>Kun Shan University</b>	BA   International Bachelor Program in Mechanical Engineering MA   International Master Program in Business Administration MA   International Master Program in Mechanical Engineering PHD   International PhD Program in Mechanical and Energy Engineering
<b>Lunghwa University of Science and Technology</b>	BA   International Business Management Program, IBM MBA   International Master of Business Administration Program, IMBA
<b>Meiho University</b>	BA   Bachelor of Business Administration BA   Bachelor of Food Science and Nutrition MA   Graduate Institute of Business and Management MA   Graduate Institute of Health Care
<b>Minghsin University of Science and Technology</b>	MA   Institute of Management MA   Institute of Precision Mechatronics Engineering
<b>National Formosa University</b>	MA   Institute of Business and Management Graduate Program MA   PHD   Institute of Mechanical Engineering and Electro-Mechanical Engineering Graduate Program
<b>National Kaohsiung First University of Science and Technology</b>	MA   International Master of Business Administration
<b>National Kaohsiung University of Applied Sciences</b>	MS   PHD   Electronics and Information Management MS   PHD   Industrial Management at Mechanical Engineering
<b>National Kaohsiung University of Hospitality and Tourism</b>	BS   International Bachelor Program in Chinese Culinary Arts BS   International Bachelor Program in Tourism Management
<b>National Pingtung University of Science and Technology</b>	BS   MS   PHD   Department of Tropical Agriculture and International Cooperation (DTAIC) BF   International Bachelor's Degree Program in Finance MS   PHD   International Degree Program of Animal Vaccine Technology MEng   International Master Program in Soil and Water Engineering (IMPSWE) MS   International Master's Degree Program in Food Science (IMAFS) MBA   International Master's Degree Program in Agribusiness Management (IABM) MS   PHD   International Program in Ornamental Fish Science and Technology
<b>National Taipei University of Business</b>	MA   International Business Master Program
<b>National Taipei University of Technology</b>	BA   MA   Department of English MS   PHD   International Graduate Program in Electrical Engineering and Computer Science (EECS) PHD   International Graduate Program in Energy and Optoelectronic Materials (EOMP) PHD   International Graduate Program in the College of Mechanical & Electrical Engineering (CMEE) IMBA   International Master of Business Administration Program (IMBA) MS   International Master Program in Mechanical and Automation Engineering

<b>National Taiwan University of Science and Technology</b>	MA   Department of Applied Foreign Languages MArch   PHD   Department of Architecture MBA   PHD   Department of Business Administration MS   PHD   Department of Chemical Engineering MS   PHD   Department of Civil and Construction Engineering MS   PHD   Department of Computer Science and Information Engineering MS   PHD   Department of Electrical Engineering MS   PHD   Department of Electronic and Computer Engineering MDes   PHD   Department of Industrial and Commercial Design MBA   PHD   Department of Industrial Management MIM   PHD   Department of Information Management MS   PHD   Department of Materials Science and Engineering MA   PHD   Department of Mechanical Engineering MS   PHD   Graduate Institute of Applied Science and Technology MS   PHD   Graduate Institute of Automation and Control MS   Graduate Institute of Biomedical Engineering MS   Graduate Institute of Color and Illumination Technology MEd   Graduate Institute of Digital Learning and Education MS   PHD   Graduate Institute of Electro-Optical Engineering MS   PHD   Graduate Institute of Finance MBA   The NTUST MBA Program
<b>National Yunlin University of Science and Technology</b>	MA   Applied Foreign Language PHD   Construction Engineering MA   Design MA   Finance MA   International Business Administration, IMBA
<b>Southern Taiwan University of Science and Technology</b>	PHD   Business and Management MS   PHD   Electrical Engineering MBA   Global MBA BBA   International Business BBA   International Finance MS   Mechanical Engineering PHD   Mechatronics
<b>Ta Hwa University of Science and Technology</b>	IBA   Tourism Management
<b>Toko University</b>	MA   International Master of Business Administration, IMBA
<b>Wenzao Ursuline University of Languages</b>	MA   Department of English-Master of Arts in English MA   Graduate Institute of Foreign Language Education and Cultural Industries MA   Master's Degree Program of International Affairs

# Visa & Arrival Information

## Visa

Students applying from abroad who have received a formal letter of admission should apply for a visa to enter Taiwan at the nearest R.O.C. embassy, consulate, or representative agency. Students may be issued a visitor visa or a resident visa, depending on the length of their study program. Students admitted to a degree program will need to apply for a resident visa. If you intend to stay for more than 6 months to study, you should apply for a resident visa.

## Required Documents

You will need the following documents:

- A completed application form with two passport-size color photos taken within the last 6 months
- A passport valid for at least 6 months and a photocopy of it (the passport should have enough empty pages)
- An admission letter issued by a college, university, or language center in Taiwan
- Proof of financial support
- Any other documents required by the college, university, or language center
- Application fee

**NOTE**  
If your spouse and children are coming with you, please bring along a notarized marriage certificate and birth certificates when you lodge the application.



## Further Information about Visas

### Visitor Visa

Foreign nationals who hold a valid passport or other legal travel document, and who intend to stay in the Republic of China (Taiwan) for less than 6 months, may apply for a visitor visa. Students holding a visitor visa who wish to stay more than 6 months should apply to change their visa to a resident visa, at the Bureau of Consular Affairs, Ministry of Foreign Affairs (MOFA).

### Resident Visa

Foreign nationals who hold a valid passport or other legal travel document, and who intend to stay in the Republic of China (Taiwan) for more than 6 months, may apply for a resident visa.

### Visa Extension

Students who hold a visitor visa and wish to stay less than 6 months are not required to change their visa status. But a student who intends to stay beyond the date when their current visa expires needs to apply for a visa extension through the National Immigration Agency before their visa expires.

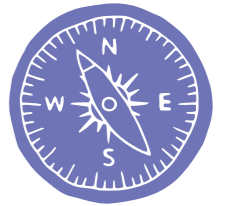


## NOTE

For more information about applying for visas and for an ARC, please go to:

Bureau of Consular Affairs, Ministry of Foreign Affairs (BOCA)  
www.boca.gov.tw

Living in Taiwan (Information for Foreigners)  
iff.immigration.gov.tw



## Arrival Information

There are four international airports in Taiwan: Taiwan Taoyuan International Airport, in Taoyuan city (about 40km from Taipei city); Taipei Songshan Airport; Taichung Airport, located in the central part of Taiwan; and Kaohsiung International Airport, located in southern Taiwan. Most international flights land at Taiwan Taoyuan International Airport. Students can take long distance highway buses from Taiwan Taoyuan International Airport to major cities, such as Taipei, Taichung, and Kaohsiung. Students can then easily get a transfer to their college or university by bus, metro, train, or taxi in these cities. Taxis are also available at the airports.

## Alien Resident Certificate (ARC)

Resident Visa holders are required to apply for an Alien Resident Certificate and Re-entry Permit at the local office of The Immigration Agency within 15 days after their arrival. They may stay in the R.O.C. as long as their Alien Resident Certificate remains valid.

## Required Documents

You will need the following documents:

- A completed application form
- Passport with a valid Resident Visa
- Student ID card or Enrollment Verification (original and a photocopy). Overseas Chinese students who are first-time applicants must submit a notification of enrollment. They will be issued a 30-day ARC by the National Immigration Agency. A student ID or enrollment verification will be needed to extend the 30-day ARC.
- One passport-sized color photo taken in the past six months
- Student ID (original and a photocopy)
- Application fee
- Health certificate - dated within the last 3 months

## Entry & Exit

### Required Documents

The following documents are needed:

### Visitor Visa

- A completed visitor visa / resident visa application form
- A valid visitor visa / resident visa
- A passport valid for at least six months
- A confirmed return air ticket or an air ticket and a visa for the next destination, and a confirmed seat reservation on the departure flight

### Exit

- Each student is required to show a passport and Alien Resident Certificate to the Customs authorities
- Students should depart before their visa expires

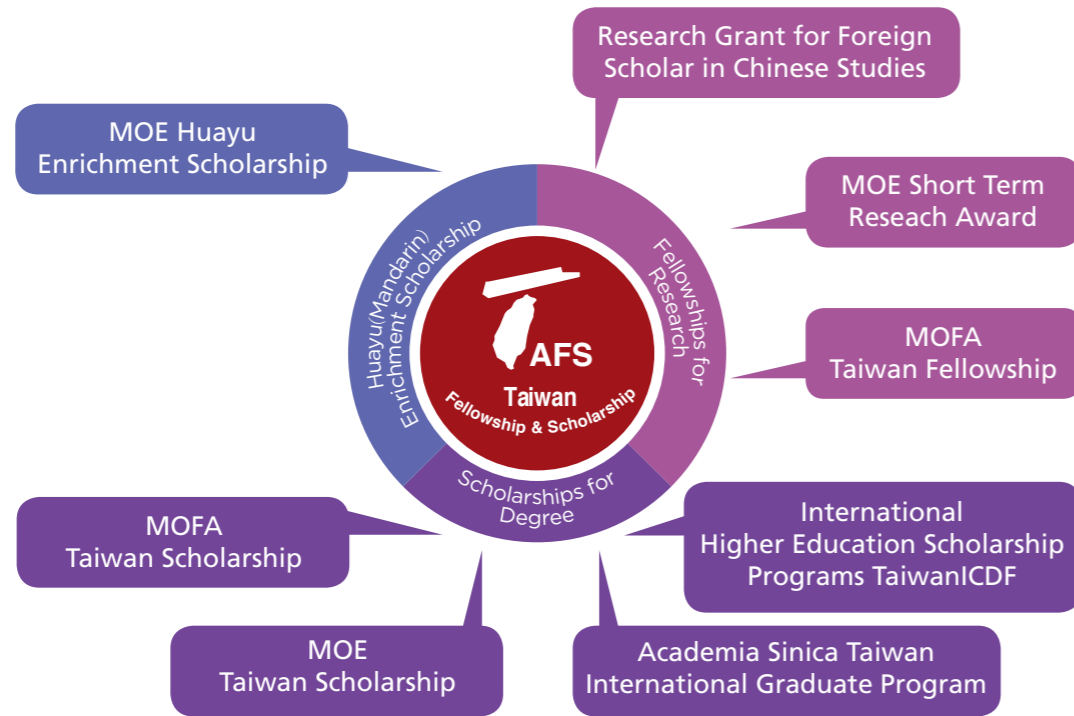
### Re-entry

- Each student is required to show a passport and Alien Resident Certificate to Customs authorities
- Students are required to apply for a re-entry permit from the authorities before they leave Taiwan and to show it to Customs officials when they re-enter

# Scholarships

## Taiwan Fellowships & Scholarships (TAFS)

The Taiwan Fellowships & Scholarships (TAFS) program is a Republic of China (R.O.C.) government initiative aimed to promote research, educational links, and enduring friendships between Taiwan and the global community. The TAFS program comprises eight awards in three categories: 1. research fellowships, 2. Huayu (Mandarin) Enrichment Scholarships, and 3. scholarships to undertake degree studies. Approximately 1,200 awards are provided annually for undergraduate students, postgraduate students, and researchers from across the world to study or conduct advanced research in Taiwan.



For more information, please visit the Taiwan Fellowships & Scholarships (TAFS) website at [tafs.mofa.gov.tw](http://tafs.mofa.gov.tw)



## Various Types of Taiwan Scholarships

Category	Program Title	Details
Huayu (Mandarin) Enrichment Scholarship	MOE Huayu Enrichment Scholarship	<ul style="list-style-type: none"> <li>Duration: summer (2 months), 3, 6, or 9 months, or 1 year</li> <li>Monthly stipend: NTD\$25,000</li> <li>For recipients from eligible countries designated by the MOE</li> </ul>
	MOFA Taiwan Scholarship	<ul style="list-style-type: none"> <li>Duration: undergraduate (max. 4 years), master's (max. 2 years), Ph.D. (max. 4 years), pre-degree Mandarin language program available (max. 1 year)</li> <li>Monthly stipend: NTD\$30,000</li> <li>*LEP monthly stipend: NTD\$25,000</li> <li>One direct round-trip economy-class ticket</li> <li>For recipients from countries with diplomatic ties with the R.O.C.</li> </ul>
Scholarships for Degree Studies (undergraduate or postgraduate)	MOE Taiwan Scholarship	<ul style="list-style-type: none"> <li>Duration: undergraduate program (max. 4 years), master's (max. 2 years), Ph.D. (max. 4 years)</li> <li>Monthly stipends: NTD\$15,000 for undergraduate programs, NTD\$20,000 for master's or Ph.D. programs</li> <li>Waiver of tuition and certain fees</li> <li>Recipients can only study at universities participating in the Taiwan Scholarship Program</li> <li>For recipients from eligible countries designated by the MOE</li> </ul>
	Academia Sinica Taiwan International Graduate Program	<ul style="list-style-type: none"> <li>Duration: Ph.D. program (max. 3 years)</li> <li>Monthly stipend: NTD\$34,000</li> <li>Recipients can only be enrolled in one of the highly specialized interdisciplinary Ph.D. programs run in collaboration with research universities in Taiwan</li> <li>Fields: (currently) in 12 fields that span the natural and physical sciences, as well as computational linguistics</li> </ul>
	TaiwanICDF International Higher Education Scholarship Programs	<ul style="list-style-type: none"> <li>Duration: undergraduate (max. 4 years), master's (max. 2 years), Ph.D. (max. 4 years)</li> <li>Monthly stipends: NTD\$12,000 for undergraduate programs, NTD\$15,000 for master's programs, NTD\$17,000 for Ph.D. programs</li> <li>Book costs, credit fees, tuition fees, housing, and insurance are covered</li> <li>Fields: mainly agriculture, medicine, engineering, business administration, and technology</li> <li>Recipients can only be enrolled in one program in collaboration with the TaiwanICDF and an associated university in Taiwan</li> <li>One direct round-trip economy-class ticket</li> <li>Recipients must be from countries with diplomatic ties with the R.O.C. and certain developing countries</li> </ul>

\*LEP: The non-degree Mandarin language enrichment program  
\*(USD\$1 = NTD\$32)

## Various Types of Taiwan Fellowships

Category	Program Title	Details
Fellowships for Research	MOFA Taiwan Fellowship	<ul style="list-style-type: none"> <li>Duration: minimum 3 months, maximum 1 year</li> <li>Monthly stipend: NTD\$60,000 for professors, associate professors, research fellows, and associate research fellows; NTD\$50,000 for assistant professors, assistant research fellows, post-doctoral researchers, doctoral candidates, doctoral program students, and others</li> <li>Fields: social sciences or humanities related to Taiwan, cross Taiwan Strait relations, mainland China, the Asia Pacific region, or other aspects of sinology</li> <li>One direct round-trip economy-class ticket (up to the subsidy maximum)</li> </ul>
	MOE Short Term Research Award	<ul style="list-style-type: none"> <li>Duration: minimum 2 months, maximum 6 months</li> <li>Monthly grant: NTD\$25,000 for Ph.D. candidates, NTD\$40,000 for post doctoral fellows</li> <li>Fields: Taiwanese culture, social sciences and related comparative research</li> <li>One direct round-trip economy-class ticket (up to the subsidy maximum)</li> </ul>
	Center for Chinese Studies Research Grant for Foreign Scholars in Chinese Studies	<ul style="list-style-type: none"> <li>Duration: minimum 3 months, maximum 1 year</li> <li>Monthly grant: NTD\$60,000 for professors, NTD\$50,000 for associate professors, and NTD\$40,000 for assistant professors and doctoral candidates. Grants for research fellows will be awarded based on their corresponding level</li> <li>Field: Chinese studies and Taiwan studies</li> <li>One direct round-trip economy-class ticket (up to the subsidy maximum)</li> </ul>
Other Awards	Taiwan Foundation for Democracy's Fellowships	<ul style="list-style-type: none"> <li>Duration: maximum 1 year</li> <li>4 categories: Dissertation Fellowships - for Ph.D. candidates writing their thesis; Postdoctoral Fellowships - for those who have recently received their Ph.D.; Democracy and Human Rights Service Fellowships - for those who want to be involved in democracy and human rights projects in Taiwan; and International Visiting Fellowships - for experienced democracy and human rights advocates</li> <li>Field: human rights or democracy</li> <li>One direct round-trip economy-class ticket</li> <li>Monthly grant: to be determined individually by the Taiwan Foundation for Democracy</li> </ul>
	Grants from the Chiang Ching-kuo Foundation for International Scholarly Exchange	<ul style="list-style-type: none"> <li>Offers differ depending on: where the application is filed, the applicant (a scholar, academic institution, or senior scholar) and the project type (conferences, workshops, publications, research projects, doctoral theses or postdoctoral studies). Please refer to the Chiang Ching-kuo Foundation for International Scholarly Exchange website for detailed information</li> <li>Fields: Chinese culture, sinology, and all aspects of the development of the R.O.C. (from its foundation to the present day)</li> </ul>

\*(USD\$1 ≙ NTD\$32)

## Applications

Program Title	Application Date
MOE Huayu Enrichment Scholarship	February 1 to March 31
MOE Taiwan Scholarship	February 1 to March 31
MOFA Taiwan Scholarship	February 1 to March 31
Academia Sinica Taiwan International Graduate Program (TIGP)	From the announcement date to March 31 of the following year
International Higher Education Scholarship Programs of TaiwanICDF	January 1 to March 18
MOE Short Term Research Award	Before the end of September
MOFA Taiwan Fellowship	May 1 to July 15
Grants from the Chiang Ching-Kuo Foundation for International Scholarly Exchange	Please visit the official website for details
Research Grant for Foreign Scholars in Chinese Studies	Before May 31
Taiwan Foundation for Democracy's Fellowships	Please visit the official website for details

\* Application dates are subject to change. For more detailed information about the Taiwan Scholarship and Huayu Enrichment Scholarship programs, please visit the official website or contact a Taiwan Representative Office directly.

See P.38~P.39 for the contact details of the nearest embassy or representative office.

## Further Information About Scholarships & Fellowships

- Academia Sinica Taiwan International Graduate Program (TIGP)  
tigp.sinica.edu.tw
- Center for Chinese Studies  
ccs.ncl.edu.tw
- Chiang Ching-kuo Foundation for International Scholarly Exchange  
www.cckf.org.tw
- Ministry of Education (MOE)  
english.moe.gov.tw
- Ministry of Foreign Affairs (MOFA)  
www.mofa.gov.tw
- Taiwan Foundation for Democracy  
www.tfd.org.tw
- Taiwan Scholarship and Huayu Enrichment Scholarship Program  
taiwanscholarship.moe.gov.tw
- TaiwanICDF  
www.icdf.org.tw



# Living in Taiwan

- Accommodation
- Living Costs
- Services
- Job Opportunities
- Taiwan Hostfamily Program

4



## Accommodation

### On-campus Accommodation

On-campus undergraduate dormitories are divided based on gender and are open to students all year-round. Typically, four to six students share a room. Pets are not usually allowed. Dormitory accommodation costs about NTD\$6,000 to \$10,000 (about USD\$188–\$313) per semester. University students usually wear something casual to class. Coin-operated laundromats can be found inside dormitory buildings. Meals at on-campus dining halls cost NTD\$40–\$130 (about USD\$1.3–\$4.1). Food stalls, cafes and inexpensive restaurants can usually be found close to campuses, typically within easy walking distance. Some campuses have on-campus health centers, which provide medical assistance for minor ailments. Some colleges and universities have a post office, a bookstore and a bank on campus.

### Off-campus Accommodation

If there is no dormitory accommodation available or if you prefer a different living arrangement, off-campus apartments, studios, and flats are available. Most Chinese learning centers provide information about local rentals on the internet. Rent ranges from NTD\$3,000 to \$13,000 per month (about USD\$94–\$406), depending on the type, quality, and location of the accommodation.

### Living Costs

The New Taiwan dollar is the official currency of Taiwan. The currency code is TWD and this is commonly abbreviated as NT\$ or NTD\$. The most commonly used denominations are the NTD\$100, NTD\$500, and NTD\$1,000 bills. There are also NTD\$200 and NTD\$2,000 bills in circulation but you will very rarely encounter them. The coins used are the NTD\$50, NTD\$10, NTD\$5, and NTD\$1 denominations. Cash payment is common in Taiwan though many shops also accept credit cards. Checks are not normally used in Taiwan for payment of everyday expenses.

Apart from your tuition fees, your accommodation costs will be your biggest financial burden. It's worth doing some research about your accommodation options before you arrive, and remember to include the cost of things such as utilities (electricity, gas, water, and telephone), public transportation, food, and so on. The cost of many things might vary depending on the area you'll be living in.



### NOTE

For further information about off-campus accommodation, please go to the Tsuei Ma-Ma Foundation website.  
[www.tmm.org.tw](http://www.tmm.org.tw)

### Daily Goods

Taiwan is well-known as one of the countries with a cheaper cost of living, but with a high quality of living. A few examples of the prices of goods are given below. You can exchange major currencies at banks handling foreign currency exchange.

\*(USD\$1  $\approx$  NTD\$32)

- |   |   |
|---|---|
| ■ Bread (a loaf) NTD\$50 $\approx$ USD\$1.6 | ■ Eggs (10 eggs) NTD\$40 $\approx$ USD\$1.3                   |
| ■ Milk (1800ml) NTD\$150 $\approx$ USD\$4.7 | ■ Gasoline (1L) NTD\$34 $\approx$ USD\$1.1                    |
| ■ Cabbage (1Kg) NTD\$39 $\approx$ USD\$1.2  | ■ Movie Ticket NTD\$260 $\approx$ USD\$8.1                    |
| ■ Rice (2kg) NTD\$120 $\approx$ USD\$3.8    | ■ Taxi (1.25km) NTD\$70 $\approx$ USD\$2.2                    |
| ■ Hamburger NTD\$70 $\approx$ USD\$2.2      | ■ Coca Cola (600ml plastic bottle) NTD\$30 $\approx$ USD\$0.9 |



# Services

## Bank Accounts

Most banks offer foreign currency exchange and bank services in NT dollars. International students can open bank accounts with their passport and ARC card. An individual who wants to open an account without an ARC card needs to get a universal identification number at the local police office.

## Postage

Chunghwa Post, the postal service of Taiwan, provides international and domestic mail services to the public. There are over a thousand branches distributed all over the island, providing regular and express postal services. International students can apply for a postal box at the nearest post office branch. Students who receive a Taiwan Scholarship need to open an account at a post office.

In addition, most convenience stores also serve as pick up locations for international and domestic express services.

## Insurance

International students with an Alien Resident Certificate (ARC) who have resided in Taiwan for 6 months must enroll in the National Health Insurance (NHI) program at a local administrative office. Before they become eligible for the NHI program, students must purchase their own insurance or participate in a temporary health insurance program offered by the international students' office at their educational institution. The insurance premium has to be paid monthly once registration is completed. The cost of NHI is included in the tuition fee every semester. Once registered with the National Health Insurance, you will only need to pay 60% of any medical bill.

International students who enroll in the NHI program should apply for the NHI IC card. Students can fill in the "NHI IC Card Application Form," and attach a photocopy of your identity document, then mail it or bring it in person to a nearby NHI branch office or liaison office. You will need the following documents: the application form, your passport and ARC, and one two-inch photo.

## Job Opportunities

International students who have attended a college, university, or language program in Taiwan for one year and who have an excellent academic record can work in Taiwan when one of the following applies:

- Events of a serious nature have affected their financial ability to support themselves or continue their education, and the student can provide evidence of such circumstances.
- An academic research institution at the student's school requires a foreign student to provide assistance in its work.
- The student needs to take part in an off-campus internship related to his or her field of study.

International students who wish to work in Taiwan are required to apply for and obtain a work permit before starting work. For more details, please visit the Workforce Development Agency website at [www.wda.gov.tw](http://www.wda.gov.tw).

## Train

The railway network along the coastline is an economic way to travel around Taiwan. Traveling by train is recommended on public holidays because it lets you avoid the hustle and bustle of a long distance highway bus service. Reserving your ticket in advance is recommended.

## Air

There are five domestic airlines providing services between major cities such as Taipei, Taichung, Tainan, Kaohsiung, and Hualien. Prior reservations are always required.

## Taiwan High Speed Rail (THSR)

If you would like to save time, THSR is another good choice. Traveling from Taipei to Kaohsiung takes 5 hours by train and 6 hours by car, but the THSR takes just over 1.5 hours. Advanced reservations are recommended.

## Motorcycles, Scooters & Bicycles

Motorcycles and scooters are very popular means of transportation. Most universities provide motorcycle and scooter parking around campus for students. Bicycles are widely used within campuses and bicycle racks can be found throughout campuses.

## Highway Buses

The long distance highway bus services provided by private transportation companies are very popular. They have an extensive network and a frequent service schedule. Tickets are usually competitively priced and some bus companies even provide a 24-hour service.

## Cars

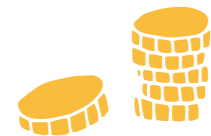
In Taiwan, vehicles drive on the right hand side of the road. Students with an international driver license may drive in Taiwan. Nevertheless, driving is not recommended for those who are unfamiliar with the unique road and traffic conditions in Taiwan. All drivers have to be extra cautious. Traffic is heavy and car drivers must constantly watch out for slow-moving pedestrians and bicyclists, and fast-moving motorcycles and scooters, as well as other cars, buses, and trucks. International or foreign driver license holders can apply for an ROC driver license at the local Motor Vehicles Office.

## Metro/Subway

In Taipei and Kaohsiung, a metro system (MRT) provides convenient and comfortable transportation. There are five major routes in Taipei and two major routes in Kaohsiung, covering different parts of the two cities. Metro fares range from NTD\$20-\$65 (USD\$0.60-\$2).

## Buses & Taxis

Each major city has its own bus system. Fares are inexpensive and services are frequent. Taxi fares start at NTD\$70 (USD\$2.2) and increase with the time and distance traveled. It is a good idea to have the name of your hotel or the address of your destination written in Chinese when you travel by taxi.



### Further information about National Health Insurance (NHI):

The NHI has provided health insurance for all people in Taiwan since 1995. The main goals are to improve patients' access to health care by easing the financial burden and to make sure that no one would be forced into bankruptcy by a serious illness.

[www.nhi.gov.tw](http://www.nhi.gov.tw)



# Transportation

easy and convenient to use

# Stay with a Host Family

## Taiwan Hostfamily Program

The purpose of the Taiwan Hostfamily Program is to give international students a more personal, first-hand experience in Taiwan by staying in a Taiwanese home with a host family. This not only gives international students a chance to see Taiwanese family life for themselves but will also allow them to build special relationships during their time here.

The Taiwan Hostfamily Program currently offers three different homestay options:

- 1 Friendship Only – this doesn't include overnight stays
- 2 Weekend Experience – for 2 or 3 days at a time
- 3 Short-term Experience – for 1 or 2 weeks as part of a short-term study program

The host families are all volunteers, and there is generally no fee for staying short-term (up to two weeks) with a host family.

To learn more about staying with a host family, please visit [hostfamily.org.tw/English](http://hostfamily.org.tw/English)



# Additional Information

Useful Links

Chinese Language Centers

Test of Chinese as a Foreign Language (TOCFL)

# 5



# Useful Links

## Taiwan Cultural and Trade Offices Abroad

These offices can provide information about studying in Taiwan and application materials and will gladly answer any additional questions you may have.

If there is no Taipei Economic and Cultural Office in your country, please visit [www.taiwanembassy.org](http://www.taiwanembassy.org) for contact information of the nearest embassy or representative office.



### North America

<b>Canada</b>	Education Division, Taipei Economic and Cultural Office in Canada	t: +1-613-231-4909 f: +1-613-231-7508 e: canada@mail.moe.gov.tw www.taiwan-canada.org/tecoedu
	Education Division, Taipei Economic and Cultural Office in Vancouver	t: +1-604-689-4111 f: +1-604-689-8086 e: vancouver@mail.moe.gov.tw www.taiwanembassy.org/CA/YVR
<b>USA</b>	Education Division, Taipei Economic and Cultural Representative Office in the United States	t: +1-202-895-1918 f: +1-202-895-1922 e: usa@mail.moe.gov.tw www.moetwdc.org
	Education Division, Taipei Economic and Cultural Office in Boston	t: +1-617-737-2055 f: +1-617-951-1312 e: boston@mail.moe.gov.tw www.moebos.org
	Education Division, Taipei Economic and Cultural Office in Chicago	t: +1-312-616-0805 f: +1-312-616-1499 e: chicago@mail.moe.gov.tw www.edutw.org
	Education Division, Taipei Economic and Cultural Office in Houston	t: +1-713-871-0851 f: +1-713-871-0854 e: houston@mail.moe.gov.tw www.moetw.org
	Education Division, Taipei Economic and Cultural Office in Los Angeles	t: +1-213-385-0512 f: +1-213-385-2197 e: losangeles@mail.moe.gov.tw www.tw.org
	Education Division, Taipei Economic and Cultural Office in New York	t: +1-212-317-7388 f: +1-212-317-7390 e: newyork@mail.moe.gov.tw www.edutwny.org
	Education Division, Taipei Economic and Cultural Office in San Francisco	t: +1-415-398-4979 f: +1-415-398-4992 e: sanfrancisco@mail.moe.gov.tw www.tweducation.org

### Central & South America

<b>Paraguay</b>	Oficina del Consejero de Educación Embajada de la República de China (Taiwán) en Paraguay	t: +595-21-213361 ext.128,122 f: +595-21-207107 e: paraguay@mail.moe.gov.tw www.roc-taiwan.org/py
-----------------	---	---

### Europe

<b>Austria</b>	Education Division, Taipei Economic and Cultural Office in Austria	t: +43-1-2124720 ext.88,62 f: +43-1-5126083 e: vienna@mail.moe.gov.tw www.taiwanembassy.org/AT
<b>Belgium</b>	Education Division, Taipei Representative Office in the EU and Belgium	t: +32-2-5110687 f: +32-2-5021707 e: belgium@mail.moe.gov.tw www.taiwanembassy.org/be
<b>France</b>	Bureau de Représentation de Taipei en France Service Education	t: +33-1-44398847 f: +33-1-44398873 e: france@mail.moe.gov.tw www.edutaiwan-france.org
<b>Germany</b>	Taipeh Vertretung in der Bundesrepublik Deutschland Abteilung für Bildung	t: +49-30-20361361 f: +49-30-20361362 e: germany@mail.moe.gov.tw www.roc-taiwan.org/de
<b>Poland</b>	Education Division, Taipei Economic and Cultural Office in Warsaw	t: +48-22-2130080 f: +48-22-5407017 e: poland@mail.moe.gov.tw www.taiwanembassy.org/PL
<b>Russian Federation</b>	Education Division, Representative Office in Moscow for the Taipei-Moscow Economic and Cultural Coordination Commission	t: +7-495-7379246 f: +7-495-7379245 e: russia@mail.moe.gov.tw www.taiwanembassy.org/ru
<b>Sweden</b>	Education Division, Taipei Mission in Sweden	t: +46-8-328200 f: +46-8-328240 e: sweden@mail.moe.gov.tw www.taiwanembassy.org/SE
<b>U.K.</b>	Education Division, Taipei Representative Office in the U.K.	t: +44-20-74365888 f: +44-20-74362605 e: london@mail.moe.gov.tw www.roc-taiwan.org/UK

### Asia & Pacific

<b>Australia</b>	Education Division, Taipei Economic and Cultural Office in Australia	t: +61-2-61201020 f: +61-2-62734560 e: australia@mail.moe.gov.tw www.taiwanembassy.org/au/edu
<b>Hong Kong</b>	Taipei Economic and Cultural Office in Hong Kong	t: +852-21602050 f: +852-25252939 e: hongkong@mail.moe.gov.tw
<b>India</b>	Education Division, Taipei Economic and Cultural Center in New Delhi	t: +91-11-26150230 f: +91-11-26150226 e: india@mail.moe.gov.tw www.taiwanembassy.org/IN
<b>Indonesia</b>	Taipei Economic and Trade Office in Jakarta	t: +62-21-5553939 ext.630 f: +62-21-5154628 e: Indonesia@mail.moe.gov.tw www.roc-taiwan.org/id
<b>Japan</b>	Education Division, Taipei Economic and Cultural Representative Office in Japan	t: +81-3-32807836 ext.39 f: +81-3-32807925 e: japan@mail.moe.gov.tw www.roc-taiwan.org/JP
	Taipei Economic and Cultural Office in Fukuoka	t: +81-92-7342810 f: +81-92-7342819 e: fukuoka@mail.moe.gov.tw www.taiwanembassy.org/JP/FUK
	Taipei Economic and Cultural Office in Osaka	t: +81-6-64438485 f: +81-6-64592390 e: osaka@mail.moe.gov.tw www.taiwanembassy.org/JP/OSA
<b>Korea</b>	Education Division, Taipei Mission in Korea	t: +82-2-3992758 f: +82-2-3992792 e: korea@mail.moe.gov.tw www.studyintaiwan.go.kr
<b>Malaysia</b>	Education Division, Taipei Economic and Cultural Office in Malaysia	t: +60-3-21615499 ext.154 f: +60-3-21619228 e: malaysia@mail.moe.gov.tw www.taiwanembassy.org/MY
<b>Thailand</b>	Taipei Economic and Cultural Office in Thailand	t: +66-2-6700200 ext.326 f: +66-2-6700220 e: thailand@mail.moe.gov.tw www.taiwanembassy.org/TH
<b>Vietnam</b>	Taipei Economic and Cultural Office in Hanoi	t: +84-4-38335501 ext.458, 459 f: +84-4-32262114 e: tweduvn@gmail.com www.tweduvn.org
	Taipei Economic and Cultural Office in Ho Chi Minh City	t: +84-8-38349160 ext.2202, 2203 f: +84-8-38349180 e: education@tweduvn.org www.tweduvn.org



Welcome to  
Taiwan!



### Useful Websites for Foreigners

Bureau of National Health Insurance	<a href="http://www.nhi.gov.tw">www.nhi.gov.tw</a>
Huayu World-Chinese Learning Portal	<a href="http://www.huayuworld.org">www.huayuworld.org</a>
Living in Taiwan	<a href="http://lff.immigration.gov.tw">lff.immigration.gov.tw</a>
Ministry of Education, R.O.C. (Taiwan)	<a href="http://english.moe.gov.tw">english.moe.gov.tw</a>
Ministry of Foreign Affairs, R.O.C. (Taiwan)	<a href="http://www.mofa.gov.tw">www.mofa.gov.tw</a>
National Central Library	<a href="http://www.ncl.edu.tw">www.ncl.edu.tw</a>
National Immigration Agency	<a href="http://www.immigration.gov.tw">www.immigration.gov.tw</a>
Replacement of Foreign Driver's License	<a href="http://tmvso.thb.gov.tw/English">tmvso.thb.gov.tw/English</a>
Resident Visa Application & Document Authentication: Bureau of Consular Affairs	<a href="http://www.boca.gov.tw">www.boca.gov.tw</a>
The E-government Entry Point of Taiwan	<a href="http://www.taiwan.gov.tw">www.taiwan.gov.tw</a>
Tourism Bureau	<a href="http://www.taiwan.net.tw">www.taiwan.net.tw</a>
Workforce Development Agency	<a href="http://www.wda.gov.tw">www.wda.gov.tw</a>

### Emergency and useful phone numbers

Fire or Ambulance	119	English Directory	106
Police	110	International Calls (operator connected)	100
Information for Foreigners	0800-024-111 (24HR)	Weather	167



### Taiwan Education Center Program Offices

These offices are subsidized by the Ministry of Education. They have information and application materials for studying in Taiwan and will gladly answer any additional questions you may have. For contact information, please visit [www.fichet.org.tw/tec/](http://www.fichet.org.tw/tec/)

# Chinese Language Centers



## NORTH

### 1. Taipei

**China University of Science and Technology**  
Language Center  
[aca.cust.edu.tw/language/](http://aca.cust.edu.tw/language/)

**Chinese Culture University**  
Mandarin Learning Center  
[mlc.sce.pccu.edu.tw](http://mlc.sce.pccu.edu.tw)

**Ming Chuan University**  
Mandarin Studies & Culture Center  
[mscc.mcu.edu.tw](http://mscc.mcu.edu.tw)

**National Chengchi University**  
Chinese Language Center  
[mandarin.nccu.edu.tw/index.php](http://mandarin.nccu.edu.tw/index.php)

**National Taipei University of Education**  
Chinese Language Education Center  
[r9.ntue.edu.tw](http://r9.ntue.edu.tw)

**National Taipei University of Technology**  
Chinese Language Training Center  
[cltc.ntut.edu.tw](http://cltc.ntut.edu.tw)

**National Taiwan Normal University**  
Mandarin Training Center  
[www.mtc.ntnu.edu.tw](http://www.mtc.ntnu.edu.tw)

**National Taiwan University**  
Chinese Language Division, Language Center  
[cld.liberal.ntu.edu.tw](http://cld.liberal.ntu.edu.tw)

**National Taiwan University**  
International Chinese Language Program  
[iclp.ntu.edu.tw](http://iclp.ntu.edu.tw)

**Shih Chien University**  
Chinese Language Center  
[chinese.usc.edu.tw/](http://chinese.usc.edu.tw/)

**Soochow University**  
Chinese Language Center  
[mandarin.scu.edu.tw](http://mandarin.scu.edu.tw)

**Taipei Chengshih University of Science and Technology**  
Mandarin Center  
[www.ssw.tpcu.edu.tw](http://www.ssw.tpcu.edu.tw)

**Tamkang University**  
Chinese Language Center  
[www.dce.tku.edu.tw](http://www.dce.tku.edu.tw)  
[chinesecenter.weebly.com](http://chinesecenter.weebly.com)

### 2. New Taipei City

**Fu Jen Catholic University**  
Center of Chinese Language and Culture  
[www.lc.fju.edu.tw](http://www.lc.fju.edu.tw)

### 3. Keelung

### 4. Taoyuan

**Chung Yuan Christian University**  
Mandarin Learning Center  
[mlc.cycu.edu.tw](http://mlc.cycu.edu.tw)

**Kainan University**  
Chinese Learning Center  
[www.knu.edu.tw/CLC](http://www.knu.edu.tw/CLC)

**Lunghwa University of Science and Technology**  
Chinese Language Center  
[www.lhu.edu.tw/mlctd/index.html](http://www.lhu.edu.tw/mlctd/index.html)

**National Central University**  
Language Center  
[www.lc.ncu.edu.tw/main/clpl/index.php](http://www.lc.ncu.edu.tw/main/clpl/index.php)

**Taoyuan Innovation Institute of Technology**  
Chinese Language Section  
[web.tiit.edu.tw/language/center/chineselen\\_about.htm](http://web.tiit.edu.tw/language/center/chineselen_about.htm)

### 5. Hsinchu

**Chung Hua University**  
Mandarin Training Center  
[international.chu.edu.tw/1page5/super\\_pages.php?ID=1page502](http://international.chu.edu.tw/1page5/super_pages.php?ID=1page502)

**National Chiao Tung University**  
Chinese Language Division, LTRC  
[mandarin.nctu.edu.tw](http://mandarin.nctu.edu.tw)

### 6. Yilan

**Fo Guang University**  
Chinese Language Instruction Center  
[www.fgu.edu.tw/~chinlang/clic.htm](http://www.fgu.edu.tw/~chinlang/clic.htm)

## Central

### 7. Miaoli

**National United University**  
Chinese Language Center  
[nuucl.weebly.com/](http://nuucl.weebly.com/)

### 8. Taichung

**Feng Chia University**  
Chinese Language Center  
[www.clc.fcu.edu.tw](http://www.clc.fcu.edu.tw)

**National Chung Hsing University**  
Chinese Program  
[cp.nchu.edu.tw/](http://cp.nchu.edu.tw/)

**National Taichung University of Education**  
Chinese Language Center  
[clc.ntcu.edu.tw/index\\_en.php](http://clc.ntcu.edu.tw/index_en.php)

**Providence University**  
Chinese Language Education Center  
[clc.pu.edu.tw](http://clc.pu.edu.tw)

**Tunghai University**  
Chinese Language Center  
[clc.thu.edu.tw](http://clc.thu.edu.tw)

### 9. Changhua

**Chienkuo Technology University**  
Language Center  
[enlc.ctu.edu.tw/bin/home.php](http://enlc.ctu.edu.tw/bin/home.php)

**National Changhua University of Education**  
Language Center  
[lc.ncue.edu.tw](http://lc.ncue.edu.tw)

### 10. Yunlin

### 11. Nantou

### 12. Chiayi

**National Chiayi University**  
Language Center  
140.130.204.81

## South

### 13. Tainan

**Kun Shan University**  
Chinese Language Center  
[www.ksu.edu.tw/eng/unit/DIT/INCL/MLC/](http://www.ksu.edu.tw/eng/unit/DIT/INCL/MLC/)

**Nan Jeon University of Science and Technology**  
Chinese Language Center  
[www.nju.edu.tw/njclc](http://www.nju.edu.tw/njclc)

**National Cheng Kung University**  
College of Liberal Arts, Chinese Language Center  
[kclc.ncku.edu.tw](http://kclc.ncku.edu.tw)

**Southern Taiwan University of Science and Technology**  
Chinese Language Center  
[clc.stust.edu.tw/en](http://clc.stust.edu.tw/en)

**Taiwan Shoufu University**  
Chinese Language Center  
[www.tsu.edu.tw/al/webs/index.php?account=Clearn](http://www.tsu.edu.tw/al/webs/index.php?account=Clearn)

### 14. Kaohsiung

**I-Shou University**  
Language Center  
[www.isu.edu.tw/interface/overview.php?dept\\_mno=335](http://www.isu.edu.tw/interface/overview.php?dept_mno=335)

**Kao Yuan University**  
Chinese Language Center  
[www.oia.kyu.edu.tw/clc/](http://www.oia.kyu.edu.tw/clc/)

**National Kaohsiung Normal University**  
Center of Language and Culture Teaching  
140.127.54.83/

**National Sun Yat-sen University**  
Chinese Language Center  
[clc.nsysu.edu.tw](http://clc.nsysu.edu.tw)

**National University of Kaohsiung**  
Division of Chinese Language, Language Center  
[www2.nuk.edu.tw/clc/clc/](http://www2.nuk.edu.tw/clc/clc/)

**Wenzao Ursuline University of Languages**  
Chinese Language Center  
[c040.wzu.edu.tw](http://c040.wzu.edu.tw)

### 15. Pingtung

**National Pingtung University**  
Language Center  
[lcc.nptu.edu.tw/bin/home.php](http://lcc.nptu.edu.tw/bin/home.php)

**National Pingtung University of Science and Technology**  
Chinese Language Center  
[clc.npust.edu.tw](http://clc.npust.edu.tw)

## EAST

### 16. Hualien

**Tzu Chi University**  
Center for Language Studies  
[www.language.tcu.edu.tw](http://www.language.tcu.edu.tw)

### 17. Taitung

## OFFSHORE ISLANDS

### 18. Penghu

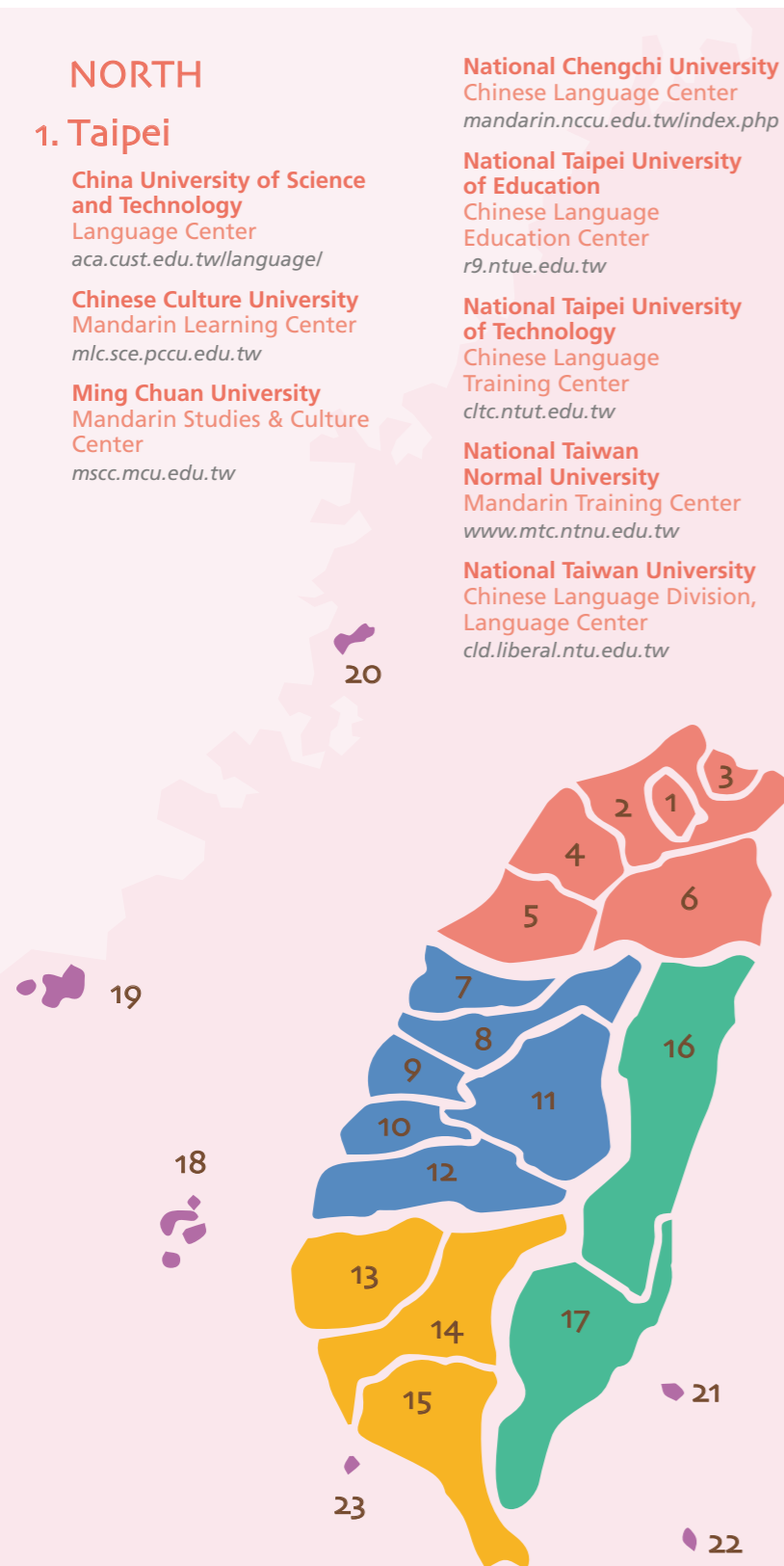
### 19. Kinmen

### 20. Matsu

### 21. Green Island

### 22. Lanyu

### 23. Little Liuqiu



# Test of Chinese as a Foreign Language (TOCFL)

## Test Introduction

The Test of Chinese as a Foreign Language (TOCFL) is a standardized language proficiency test developed for non-native speakers of Chinese. It has already served test takers from over 60 countries. The current TOCFL test is divided into three proficiency bands: Band A, Band B, and Band C, and each band is subdivided into two levels, making a total of six levels: from Level 1 up to Level 6. It offers separate testing of listening, reading, speaking, and writing. Test takers can choose the test levels that best suit their Chinese language proficiency and learning background.

Test Level	Test Result	Learning Hours (in Chinese speaking country)	Learning Hours (in non-Chinese speaking country)	Vocabulary Base
Band A	Level 1 (A1)	120–240 hours	240–480 hours	500 words
	Level 2 (A2)	240–360 hours	480–720 hours	1,000 words
Band B	Level 3 (B1)	360–480 hours	720–960 hours	2,500 words
	Level 4 (B2)	480–960 hours	960–1,920 hours	5,000 words
Band C	Level 5 (C1)	960–1,920 hours	1,920–3,840 hours	8,000 words
	Level 6 (C2)	More than 1,920 hours	More than 3,840 hours	8,000 words

## Purpose of the TOCFL

TOCFL test takers who reach the level requirements will receive a certificate. A TOCFL certificate can serve as a Chinese proficiency credential for:

- applying for a Taiwan Scholarship
- applying for an academic program at a college or university in Taiwan
- evidence of Chinese subject proficiency for the University Entrance Committee for Overseas Chinese Students
- evidence of Chinese language proficiency for employment purposes

A TOCFL certificate can be used as an official document when applying for admission to undergraduate and graduate programs in Taiwan, and many international businesses have adopted TOCFL as evidence of language proficiency for their employees who are being assigned to work in or with Taiwan.

## Target Test Takers

TOCFL is designed for non-native speakers of Chinese. Those who would like to know their level of Chinese proficiency, or those who want to study, work or do business in Chinese speaking countries are welcome to take the test.

## TOCFL Testing Overseas

The Steering Committee for the Test of Proficiency-Huayu (SC-TOP) started to provide overseas test services in 2006 to meet the demands of numerous international Chinese learners. Candidates can now choose to take the TOCFL tests in Argentina, Australia, Austria, Belgium, Canada, France, Germany, Indonesia, Japan, Korea, Malaysia, New Zealand, Paraguay, Poland, Russia, Sweden, Switzerland, Thailand, the U.K., the U.S.A., and Vietnam. For more information, please visit the website: [www.sc-top.org.tw](http://www.sc-top.org.tw)

## TOCFL Testing in Taiwan

2016 TOCFL schedule

- [www.sc-top.org.tw/english/registration.php](http://www.sc-top.org.tw/english/registration.php)

Registration

- [reg.sc-top.org.tw](http://reg.sc-top.org.tw)

Contact the Steering Committee for the Test of Proficiency-Huayu (SC-TOP)

- TEL: +886-2-77148201  
+886-2-77148205
- FAX: +886-2-26014181
- E-mail: [service@sc-top.org.tw](mailto:service@sc-top.org.tw)
- Website: [www.sc-top.org.tw/](http://www.sc-top.org.tw/)
- Mailing Address: P.O. Box 7-400 Taipei City 10699 Taiwan
- Location: 7F, Information and Academic Building, No. 2, Section 1, Ren-ai Road, Lin-kou District, New Taipei City 24449, Taiwan (R.O.C.)



## FICHET: Your all-inclusive source of information about studying in Taiwan

FICHET - the Foundation for International Cooperation in Higher Education of Taiwan - is a non-profit organization of universities, founded in 2005. It currently has 116 member universities.

Tel: +886-2-23222280

Fax: +886-2-23222528

E-mail: [fichet@fichet.org.tw](mailto:fichet@fichet.org.tw)

Website: [www.fichet.org.tw](http://www.fichet.org.tw)