



Ministry of Education, R.O.C.  
Website: www.edu.tw



Foundation for International Cooperation  
in Higher Education of Taiwan (FICHET)  
Website: www.fichet.org.tw  
E-mail: fichet@fichet.org.tw

2015 VERSION

Study in Taiwan APP  
Scan now to download!



## TABLE OF CONTENTS

### 1 WHY TAIWAN?

- 02 Why Taiwan?
- 03 International Students' Perspectives / Reasons

### 2 GETTING TO KNOW TAIWAN

- 08 Fascinating Taiwan
- 10 History
- 10 Geography
- 10 Climate
- 11 Culture
- 11 Cuisine
- 12 Fun Taiwan

### 3 STUDYING IN TAIWAN

- 14 Taiwan's Education System
- 16 Choosing Where to Study & Applying
- 18 Colleges, Universities & Graduate Schools
- 20 International Programs
- 30 Visa & Arrival Information
- 32 Scholarships

### 4 LIVING IN TAIWAN

- 38 Accommodation
- 38 Living Costs
- 40 Services
- 40 Job Opportunities
- 42 Taiwan Hostfamily Program

### 5 Additional Information

- 44 Useful Links
- 48 Chinese Language Centers
- 50 Test of Chinese as a Foreign Language (TOCFL)

# WHY TAIWAN?

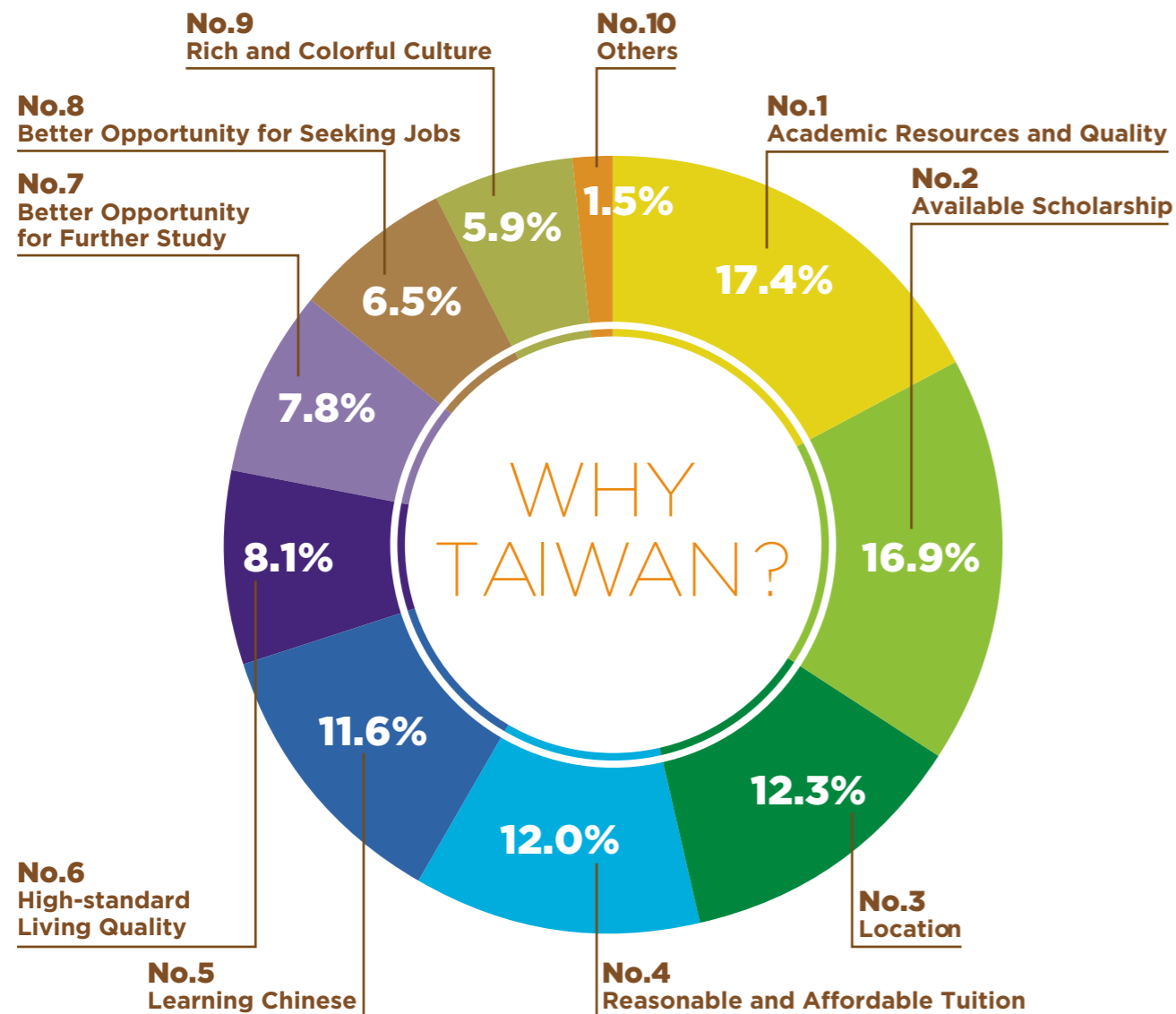
- Why Taiwan?
- International Students' Perspectives / Reasons



# WHY TAIWAN?

Taiwan has an outstanding higher education system that provides opportunities for international students to study a wide variety of subjects, ranging from Chinese language and history to tropical agriculture and forestry, genetic engineering, business, semi-conductors and more. Chinese culture holds education and scholarship in high regard, and nowhere is this truer than in Taiwan. In Taiwan you will experience a vibrant, modern society rooted in one of world's most venerable cultures, and populated by some of the most friendly and hospitable people on the planet. A great education can lead to a great future. What are you waiting for? Come to Taiwan and fulfill your dreams.

10 REASONS TO STUDY IN TAIWAN



# THE REASONS WHY I CHOSE TAIWAN

Let's listen to what international students say about "Why Taiwan?"



**KORAWIT CHAISU**

from Thailand



**Identification**  
Degree student

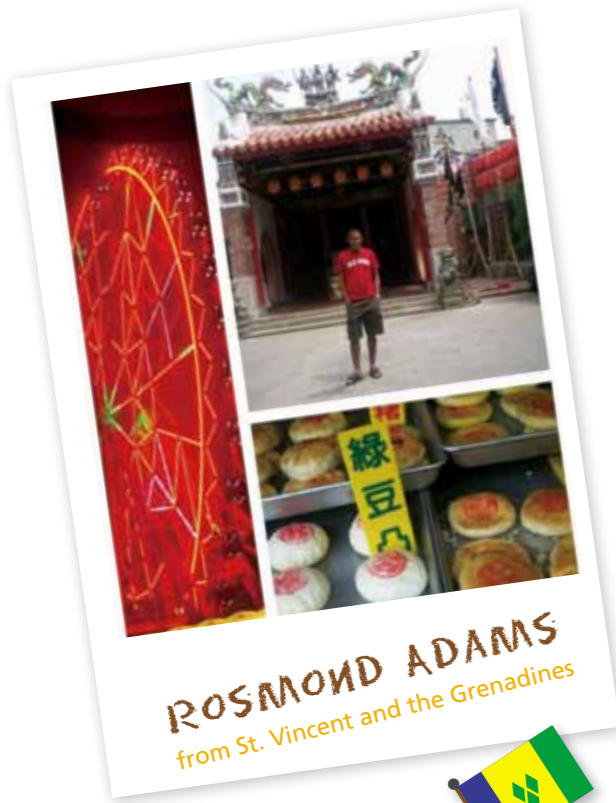
**Major**  
Tropical Agriculture and International Cooperation (Ph.D.)

**Name of University in Taiwan**  
National Pingtung University of Science and Technology

The reason why I choose to continue my Ph.D. in Taiwan is because the best educational system which provides students full knowledge along with professional research skill. Moreover, studying at NPUST can fulfill my special interest in microbiology and the benefits of microorganisms, such as the plastic-degrading microorganisms, or relevant and expert research, to develop a higher level of research which will be benefit for environmental treatment in Thailand.

Studying in Taiwan provides great opportunities to learn both local culture and other cultures from my new friends who come from many parts of the world. Meanwhile I also have a chance to present Thai culture, such as, Thai traditional performance, speech, etc. I also love to learn Chinese language which is a very important language in global communication nowadays.

HAVE FUN WITH US!!

**ROSMOND ADAMS**  
from St. Vincent and the Grenadines**Identification**

Degree student

**Major**

International Health Program (MA)

**Name of University in Taiwan**

National Yang-Ming University

Taiwan is the first Asian country that I have visited and without a doubt I understand why its old name is Formosa. The name gives the impression of a famous place and indeed I must say that Taiwan will always be a famous place in my heart.

It is a country not only rich in resources but rich in culture. From the beautiful mountains of Yang Ming to the pristine clear waters of the Baishawan Beach, there is something for everyone to explore. Taiwan is the perfect destination to combine study with pleasure. People can achieve their educational goals and at the same time they can fully understand the Taiwanese culture and make their study adventurous.

**Identification**

Degree student

**Major**

International Environmental Sustainable Development (IESD) (MA)

**Name of University in Taiwan**

National Central University

My study integrates energy and environmental in sustainability view. I think my knowledge and vision have been broadened. This is due to the support of the Professors who are really helpful, and also due to multicultural condition in my study program.

Studying in Taiwan is also a great opportunity to learn Chinese, not only to ease my daily life but as Nelson Mandela said, talking to the people in their language that goes to their heart. Besides, living and traveling in Taiwan also taught me a lot about life, making friends and memories, and knowing myself better.

Finally I must state that I never thought my definition of studying in Taiwan would be expanded until I experience it. There is more in studying in Taiwan rather than only academic life, thus I do and will always seize my days in Taiwan.

**IRENE**  
from Indonesia

COME TO TAIWAN

**MAY PHONVISAY**

from Laos

**Identification**

Degree student

**Major**

Animal Science (Ph.D.)

**Name of University in Taiwan**

National Pingtung University of Science and Technology

Taiwan has an outstanding higher education system that provides opportunities for international students to study a wide variety of subjects. Taiwan's strong technology sector guarantees high quality education in my interesting field. In Taiwan I will experience a vibrant, modern society rooted in one of world's most venerable cultures, and populated by some of the most friendly and hospitable people on the planet. A great education can lead to a great future. There are many reasons for coming here and the most important is that Taiwan encourages promising students from foreign countries to learn Mandarin and provides scholarship. Come to Taiwan and fulfill your dream.

**Identification**

Degree student

**Major**

International Health (MSc)

**Name of University in Taiwan**

National Yang-Ming University

I was awarded the Taiwan ICDF scholarship to perform an MSc in International Health at NYMU. I decided to follow my heart and passion: Public Health. Even though there is a cultural difference between Taiwanese and us, foreigners, I never perceived it as a barrier by definition. I have met the most welcoming and caring people.

The university is beautiful and modern. The library has a vast variety of literary selections. They have a friendly staff, and you can always see them go out of their way to enhance your experience, organizing activities to get you acquainted with the culture. The country has always viewed education as a priority in their agenda, and all students are guaranteed to receive the highest-quality academic formation.

With my testimony, I'm a firm believer that you should always embark on the road less traveled by. Without having this concept in mind, I would have never been exposed to such a magnificent experience.

**NATALIA SERRANO  
ESPINOSA**

from Colombia





**Identification**  
Degree student

**Major**  
Do research for Ph.D. project

**Name of University in Taiwan**  
National Cheng Kung University

Studying abroad is a big step in one's life and plays a big role in shaping one's personality – at least this is the case for me. There's the culture shock, the language barrier, other eating habits, people from all kind of nationalities, a whole new life. Although I have the ability to adapt to new surroundings quickly, Taiwan still manages to surprise me often (in a positive way). The experience of daily life here has broadened my horizon and opened my mind for many things. Sometimes I really stumble upon my limits, I want to give up and go "home". On other days, I feel so much at home here that I don't want to go back at all.

So I just love every day here, because I can never be sure about what delicious food I will find or what kind of new friends I will encounter. It's the perfect mixture of studying concentrated on the one side, and having fun on the other. I very much hope that after graduation, I can come back and find a place to work and to live here for some years. As Ye Shitao said: "Tainan is the place to dream, to work, to love, to get married, and to live your life."

WE MADE  
THE BEST DECISION!!

# GETTING TO KNOW TAIWAN

- Fascinating Taiwan
- History
- Geography
- Climate
- Culture
- Cuisine
- Fun Taiwan



# FASCINATING TAIWAN

Taiwan is a modern, free, democratic society whose people are hardworking, fun-loving, educated and friendly. While eagerly embracing the future, the people of Taiwan hold onto traditional values and ideals. The family, including ancestors, is of utmost importance; and education and scholarship are held in high esteem. Traditional forms of writing, architecture and art are part of everyday life. Yes, in Taiwan the ancient and modern, traditional and new are seamlessly woven together, creating a fascinating, dynamic society like no other in the world.

We welcome you to our friendly island paradise!

The “beautiful Formosa” you’ll be exploring ... have you ever wondered what it’s like? Our rankings tell the story!

## Economic Competitiveness

- 13<sup>th</sup> in the World Competitiveness Yearbook Rankings (IMD, 2014)
- 12<sup>th</sup> in the World Economic Forum (WEF) (WEF, 2013)
- 16<sup>th</sup> in the Doing Business 2014 (World Bank, 2013)
- 13<sup>th</sup> (1<sup>st</sup> in Asia) in the Knowledge Economy Index (World Bank, 2012)
- 8<sup>th</sup> (1<sup>st</sup> in Asia) on Education in the Knowledge Economic Index (World Bank, 2012)

## Traveling and Environment

- 2<sup>nd</sup> safest country (based on crime statistics from the U.S. FBI)
- 6<sup>th</sup> in Networked Readiness Index (NRI)(WEF, 2011)
- 11<sup>th</sup> among 52 Places to Go in 2014 (New York Times, 2014)
- Taipei is the 1<sup>st</sup> remarkable place for solo travel (out of 26) (BuzzFeed.com, 2014)

## Excellence in Higher Education

- 12<sup>th</sup> in the Top 100 Asian universities (2014 QS Asian university ranking)
- 13<sup>th</sup> in the Top 100 Asian universities (2014 Times Asian university ranking)
- 4<sup>th</sup> in the Top 100 universities under 50 years old ranking

## Excellence in Industrial Design

### HTC one smartphone/HTC

- ◆ 2014 iF Product Design Award



### ASUS ZenFone , ROG Maximus VI Formula motherboard /Asus

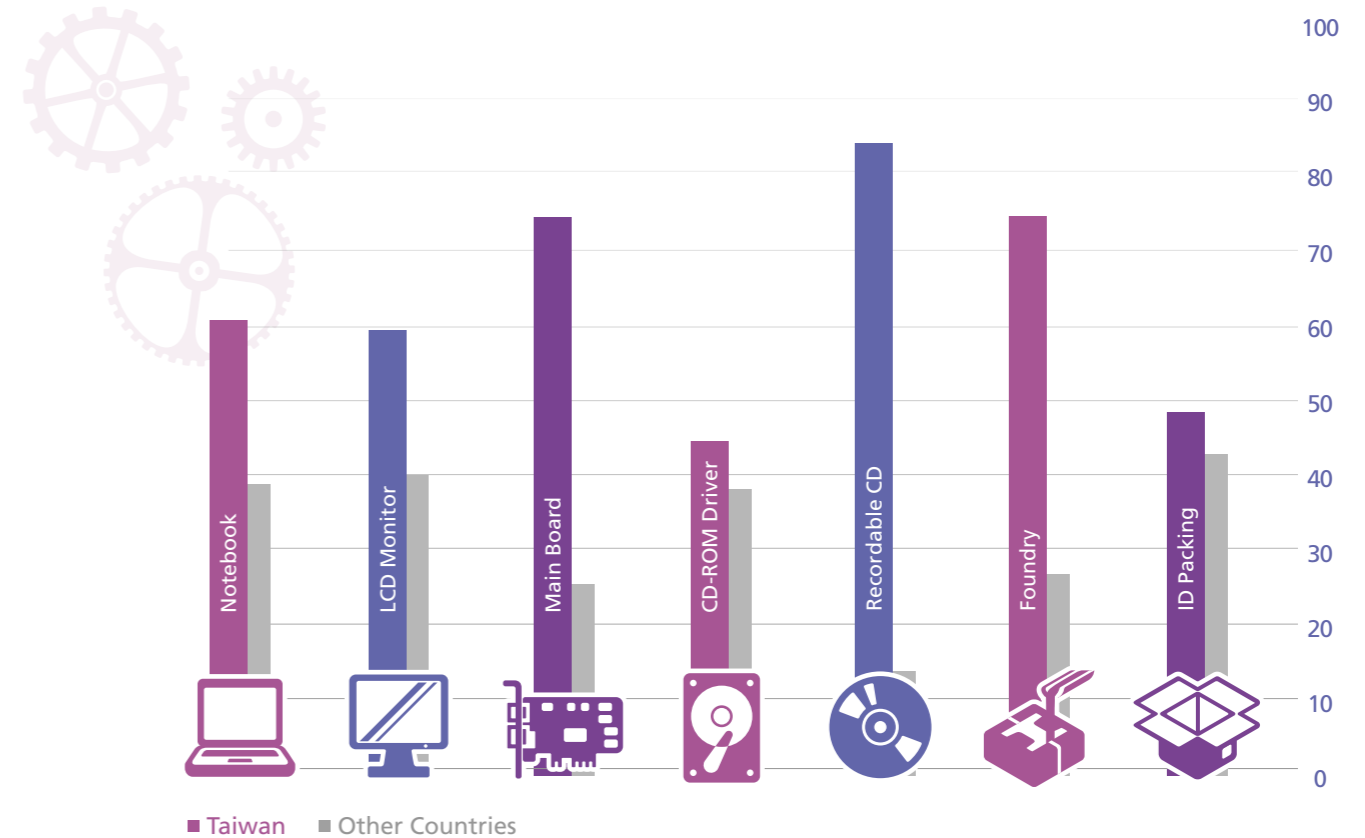
- ◆ 2014 Red Dot Awards for Product Design

### Acer Aspire R7 notebook, Liquid Z5 smartphone, and K137 projector/Acer

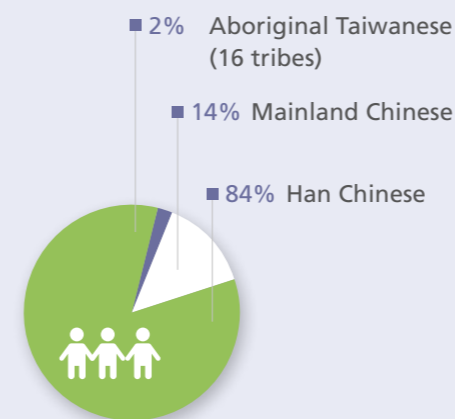
- ◆ 2014 iF Product Design Awards

## Excellence in IT Products

Global Market Share (%)



## TAIWAN, Republic of China



### GEOGRAPHY

<b>Location</b>	Pacific Ocean, 120 km (74.6 miles) off the coast of mainland China
<b>Territory Size</b>	36,193 km <sup>2</sup> (13,973.3 sq miles)
<b>Highest Point</b>	Yu Shan (3,952 m=12,965.9 ft)
<b>Capital City</b>	Taipei

### DEMOGRAPHICS

<b>Population</b>	23,440,278
<b>Density</b>	647 people per square km
<b>Ethnic Groups</b>	Taiwanese people 84% Han Chinese 14% Mainland Chinese 2% Aboriginal Taiwanese(16 tribes)
<b>Official Language</b>	Mandarin

### OTHER

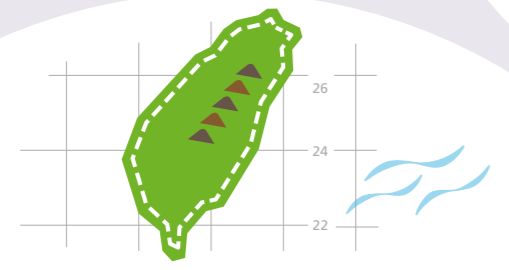
<b>Currency</b>	New Taiwan Dollar (NTD)
<b>Electricity</b>	Electrical current is 110 volts, 60 cycles, AC
<b>Drive On</b>	Traffic drives on the right
<b>Calling Code</b>	+886
<b>Time Zone</b>	UTC+8



# HISTORY

The name "Taiwan," meaning "terraced bay," was first used in 1430 by Admiral Cheng Ho of the Ming court. The Portuguese named the island "Ilha Formosa" meaning "Beautiful Island" in the 16<sup>th</sup> century, and the name "Formosa" was used until the end of WWII.

Situated between northern and southern Asia, Taiwan has long played a crucial role in trade and politics. Taiwan's location brought frequent invasions, but it also provided the conditions for it to become a modern, prosperous and democratic country.



# GEOGRAPHY

Taiwan lies along the western edge of the Pacific Ocean, 193 km (120 miles) off the southeastern coast of mainland China. Taiwan has a land area of about 36,000 square km (14,400 square miles) and is nearly bisected by the Tropic of Cancer. Taiwanese people say their island is shaped like a sweet potato, a popular food there.

Taiwan has broad plains, rolling hills along its coasts and precipitous mountains form the spine of the island. There are six peaks over 3,500 m—the highest is Yu Shan at 3,952 m—and more than 200 peaks over 3,000 m. Swift rivers have carved steep gorges through the mountains. Taroko Gorge, with its vertical rock walls hundreds of meters high, is a wonder of nature. Geothermal activity has produced many hot springs in the mountains.

Due to the abundant rainfall and generally warm temperatures, vegetation grows rampantly in Taiwan, from lowland agricultural crops to all manner of plant life cloaking the hills and mountains. Its unique climate and geography have given Taiwan a tremendously diverse range of flora and fauna, and many species are endemic to the island.



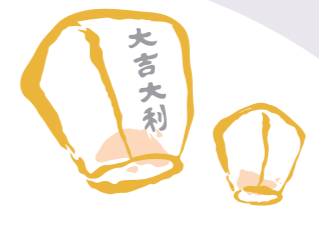
# CLIMATE



In subtropical, northern Taiwan, the temperature during the cool, mild winters averages 18°C /64°F. The average temperature rises to 31°C /88°F during the hot, humid summers. Southern Taiwan has a tropical, marine climate with generally warm and relatively dry weather.

In the mountains, temperate conditions prevail. Snow may accumulate on some of the highest peaks, such as Yu Shan and Ho-Huan Shan. Rain may fall at any time, but the greatest rainfalls usually occur from April to August. The typhoon season is from May to September.

# CULTURE



The culture of Taiwan is a blend of modern and traditional, national and international, unique and universal. The influences of Taiwan's complex political history, its indigenous peoples' culture, Confucianism, Japan, and Western civilization can all be seen at the same time.

The Japanese occupation of Taiwan from 1895 to 1945 influenced the language, culture, and architecture. Visitors can still find a Japanese-style mansion and hear old Japanese songs emanating from nearby taverns in the Beitou area.

Taiwan's aboriginal cultures are unique and started to flourish when the Ami people's chant "Jubilant Drinking Song" was sampled in a song used to promote the 1996 Olympics. But the dominant culture in Taiwan is still Chinese. Immigrants from mainland China, especially those who arrived in 1949 after the civil war, brought Confucianism and Chinese culture to Taiwan. Visitors will see ornate temples and traditional Chinese characters throughout Taiwan. The National Palace Museum has an outstanding collection of 650,000 pieces of ancient Chinese artifacts brought from the Forbidden City, making it a major attraction for visitors.

# CUISINE



In Taiwan, it seems that people live to eat! There are snack shops and restaurants located within convenient walking distance in every town and city. Foods and dishes from around the world are available in Taiwan, but Taiwan's native cuisine is unforgettable and has now gained worldwide attention - try it just once and you'll remember it forever. Memorable dishes include: pearl milk tea, Danzai noodles, shrimp pork soup, oyster omelet, meat rice tamales, stinky tofu, Taiwanese meatballs, coffin sandwiches, veggie and meat wrap, oyster Vermicelli, steamed sandwiches, and crushed ice desserts.



JUST COME AND JOIN US



DELICIOUS FOOD!



COME AND EXPERIENCE LIFE

# FUN TAIWAN



Let's hear about international students' traveling experiences in Taiwan!

## Chiufen



### Kumiko Yamaguchi



Name of University in Taiwan  
Ming Chuan University  
from Japan

Chiufen is one of the most popular tourist place in Taiwan and also is the model of a famous Japanese Ghibli movie, "Spirited Away".

A-Mei Tea House is a famous building in Chiufen. Walk around the street you can feel the atmosphere there that you could not feel in any country. It is really beautiful with the red lanterns and also you can taste special nice food there.

I recommend you to go Auntie A-Gan Sweet Taro Ball to eat Taro ball which made by Taro, you could either order cold or hot. In winter season, I recommend you to order hot one. The ball inside got many kinds of bun with red, green beans soup. Have a nice tea time with a wonderful view outside of the window.

After finishing the Taro bun soup, do not forget to go to Taro Potato Teahouse. It is a cave you could write anything you want with or whiteout a pen. You could see how many people had visited Chiufen and it is a memorable place for every person.

Chiufen is located on top of the mountain and rains often, so do not forget to bring an umbrella and a jacket with you if you are going to visit there in winter.

## Sun Moon Lake



### Harry Febrin



Name of University in Taiwan  
Chinese Culture University  
from Indonesia

This time, the beauty of Sun Moon Lake begin with a gondola ride 142 meters above the ground, accompanied by raindrops. I remember clearly how this kind of altitude give a wonderful scenery. The beauty of the largest lake in Taiwan. Bluish water surrounded by the green forest. All motionless except the gondola I took. Thin mist accentuate the surreal feeling. It just like watching a movie in slow motion.

Sun Moon Lake indeed is a special one. Geographically, this lake is located in Nantou, right in the middle of Taiwan. It is often said that the shape of Taiwan looks like a sweet potato, this lake must be the sweet nectar we got when we roasted it with honey!

No wonder, CNN voted this place as one of the best top ten bicycling routes in the world.

# STUDYING IN TAIWAN

- Taiwan's Education System
- Choosing Where to Study & Applying
- Colleges, Universities & Graduate Schools
- International Programs
- Visa & Arrival Information
- Scholarships



# TAIWAN'S EDUCATION SYSTEM

## Overview

The people of Taiwan are very well educated, literacy is about 98.39%, and students from Taiwan score very high on international tests. These achievements are the product of cultural and societal values that hold education in high esteem, and the comprehensive education system created to achieve Taiwan's goals of becoming a well-educated, economic and technological powerhouse on the world stage. Under the current education system, students may study for up to 20 years: 6 years of primary education, 3 years of junior high school, 3 years of senior secondary school, 4 to 7 years of college or university, 2 to 4 years for a master's degree and 2 to 7 years for a doctoral degree.

**NOTE**  
In most higher education institutions in Taiwan the academic year begins in and finishes in August the following year. The academic year has 2 semesters: the first semester is from August to, and the second semester is from to July. There are 2 holiday seasons: the winter vacation, January–February, and the summer vacation, July–August.



## Compulsory Education

Students in Taiwan have 12 years of basic education, comprising 6 years of elementary school, 3 years of junior high school, and 3 years of senior high school or vocational high school. Students usually start first grade at age six. At the end of junior high school, students take a set of examinations to qualify for different senior secondary and vocational schools.

## Senior High Schools and Vocational High Schools

There are two types of senior secondary level schools for continuing students after they graduate from junior high school: senior high schools and vocational high schools. Both take 3 years to complete.

## Specialized Training

Specialized training beyond the secondary level is provided by 5-year junior colleges which focus on applied sciences and technology. These accept students directly after junior high school.

## Higher Education

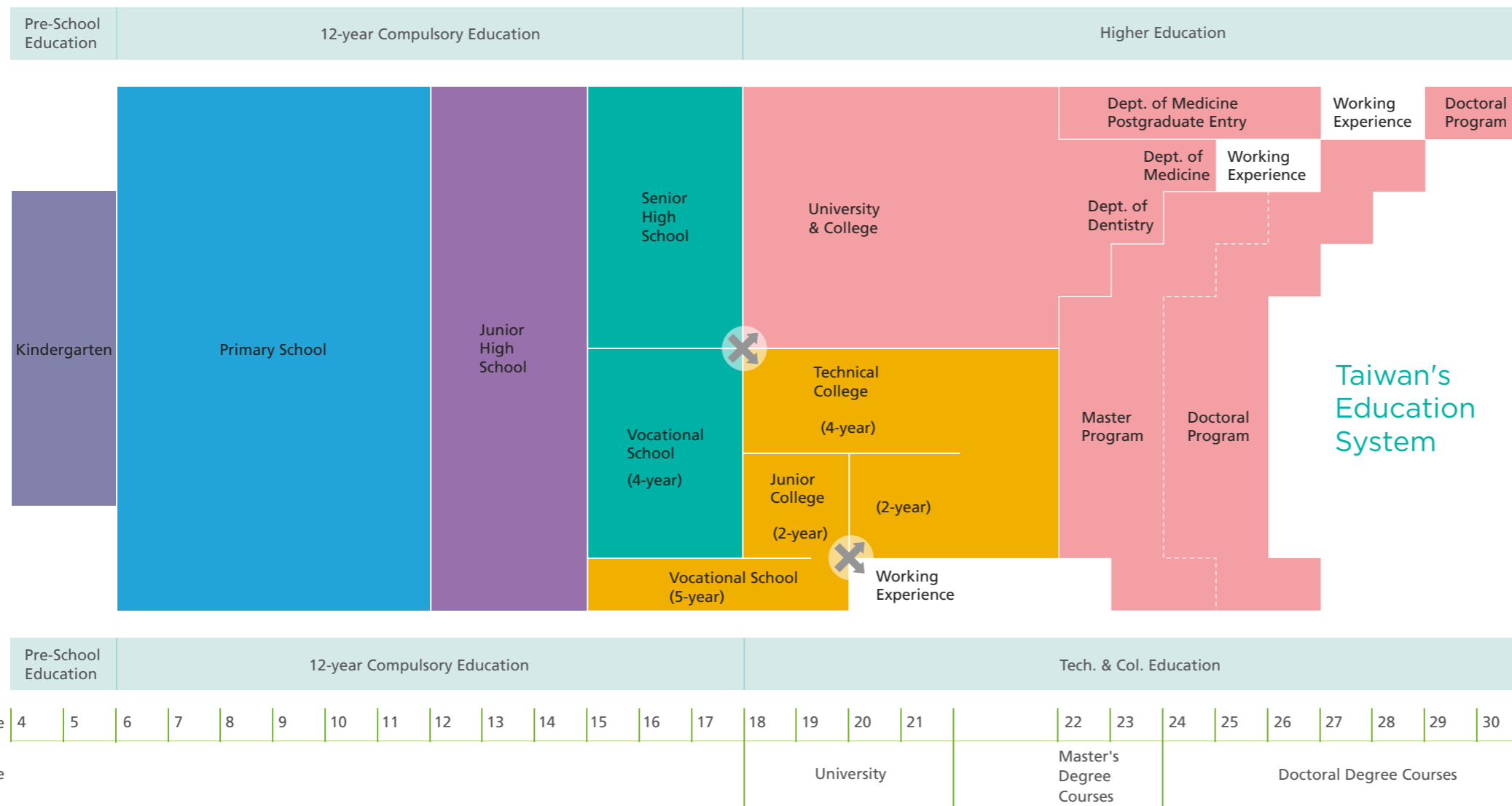
The higher education system in Taiwan is provided by 2-year junior colleges, 5-year junior colleges, technical colleges, liberal arts colleges, universities, and institutes offering graduate programs.

Most university undergraduate programs take 4 years to complete. Extensions of up to 2 years may be granted to students who are unable to fulfill their requirements within the designated time. Some specialized undergraduate programs, such as dentistry (6 years) and medicine (7 years), take longer to complete.

Universities and colleges in Taiwan offer a wide variety of master's and doctoral degree programs. Graduate programs leading to a master's degree take 2 to 4 years to complete, while doctoral degree programs take 2 to 7 years. A student who enters graduate school as part of on-the-job training and fails to finish the required coursework or complete a thesis within the expected time may be granted an extension.

**Number of universities in Taiwan: 156 (public 58; private 98)**

**Number of international students in 2014: 92,685**



# CHOOSING WHERE TO STUDY AND APPLYING

## Choosing a School

A wide range of colleges and universities welcome international applicants. Applicants can choose one based on their personal interests and the courses offered. A list of universities and colleges, both public and private, can be found at the website "Study in Taiwan" ([www.studyintaiwan.org](http://www.studyintaiwan.org))

### Tuition

Students who intend to study in Taiwan should note that tuition fees at colleges and universities vary. The tuition fee may also vary from program to program within a university. The following is a brief summary of tuition fees in 2014:

Degree	Tuition Fee (per semester)
Bachelor's	NTD 45,000-54,000 (about USD 1,500-1,800)
Master's	NTD 48,000-60,000 (about USD 1,600-2,000)

\*(USD1 ≙ NTD30)

### Procedure

- 1 Make sure you're eligible to apply as an international student
- 2 Make sure you've done research about programs that interest you
- 3 Make sure the program you intend to apply for is open to international students
- 4 Make sure you're well aware of and meet all the requirements of individual colleges or universities
- 5 Make sure you fill in the application form correctly and have all the required documents
- 6 Make sure to send the application package in time
- 7 Make sure you've received an admission letter. You'll need it to apply for a visa and registering

## Choosing a Chinese Language Center

Taiwan is an ideal place for international students who want to learn Mandarin, the official language of Taiwan. In Taiwan, traditional characters are used, and learning them will allow students to fully appreciate Chinese language and to communicate, in writing, with people who speak other Chinese dialects.

See P.48~P.49 for the locations and websites of Chinese Language Centers

### Tuition

41 Chinese Language Centers in Taiwan provide various types of courses, tuition fee also varies from every center. The following is a brief summary of tuition fees:

#### General Course

Total hrs	180 hours or more
Tuition fee	NTD 18,300-43,500 (about USD 610-1,450)

#### Intensive Summer Course

Total hrs	80~240 hours
Tuition fee	NTD 12,000-65,000 (about USD 400-2,200)

\*(USD1 ≙ NTD30)

### Procedure

- 1 Decide which Chinese Language Center you would like to apply to
- 2 Determine the cost of studying at the Chinese Language Center you're most interested in
- 3 Check when applications are due and make sure the period of instruction fits your schedule
- 4 Complete your application
- 5 If you are accepted, you will receive a formal letter of admission

## Application

Please note: each institution has its own requirements and standards to determine whether applicants are qualified for admission. Students must show proof that they have medical and personal accident insurance or national health insurance at the time of registration.

See P.19 for document submission



### Choose Your University and Course

Study in Taiwan Website  
[www.studyintaiwan.org](http://www.studyintaiwan.org)  
Ministry of Education, Taiwan  
[english.moe.gov.tw](http://english.moe.gov.tw)

### NOTE

Students applying for an undergraduate, graduate or doctoral program can submit their application all year round. The deadline for first semester submissions varies from university to university, but it usually falls in March.

Students who want to apply for a Chinese language learning course can submit their application all year round. There are usually four terms offering courses: spring, summer, fall and winter.

# COLLEGES, UNIVERSITIES & GRADUATE SCHOOLS

## Universities and Colleges

The curriculum at most universities focuses on academic studies and research. Universities of technology focus on practical and specific skills training. Students with a distinguished academic performance can apply for promotion to a higher level if their college or university allows this.

University undergraduate programs usually require four years to complete; but students who are unable to fulfill their requirements within the designated time may be granted an extension of up to two years. Specialized undergraduate programs such as dentistry and medicine require six to seven years, including an internship of one year.

### Admission Requirements

Graduation from senior secondary (high) school or equivalent

### Documents for Submission

- Photocopies of original graduation diploma (if the original is not in English or Chinese, an English or Chinese translation must be provided)
- Financial statement
- Statement of purpose
- Letters of recommendation
- Application fee
- Other documents required by the university or college

### Graduation and Completion Requirement

Earn at least 128 credits

Meet the  
friendly people  
in Taiwan!



## Graduate Schools

Students are awarded a master's degree upon completion of their postgraduate study. A master's degree program usually requires 2 to 4 years of study; and a doctorate program (PhD) requires 2 to 7 years of study.

### Eligibility Requirements for Admission

#### Master's Program

- Graduation from an undergraduate program or equivalent
- Pass the master's degree program entrance examination

#### Ph.D. Program

- Graduation from master's program or equivalent
- Pass the Ph.D. entrance examination

### Documents for Submission

- Application forms
- Photocopies of original graduation diploma (if the original is not in English or Chinese, an English or Chinese translation must be provided)
- Financial statement
- Statement of purpose
- Letters of recommendation
- Application fee
- Other documents required by the college, university, or institute

### Graduation and Completion Requirement

#### Master's Program

- Earn required credits, produce a thesis, and pass a final examination
- For master's degree programs in the arts, applied sciences and technology, the thesis may be replaced by an exhibition or performance plus a written or technical report

#### Ph.D. Program

- Earn required credits, pass the Ph.D. candidate qualification examination, produce a dissertation, and pass the oral examination

## Chinese Language Centers

There are 41 Chinese Language Centers located at colleges and universities throughout Taiwan, offering classes year-round. These learning centers provide a variety of courses for students of all levels of proficiency. The instruction and teaching materials are top-notch and designed to help students achieve their language goals. Outside of class, students will have innumerable opportunities to practice reading Chinese characters and speaking Mandarin with the friendly citizens of Taiwan. Imagine being able to practice what you've just learned with native speakers on campus, in coffee shops, convenience stores or dance clubs! With its wonderful blend of tradition and modernity, Taiwan truly is an ideal place to learn Mandarin!

### Documents to be Submitted

- A completed application form
- A copy of your passport
- An original copy of your personal financial statement, valid within the last 6 months. Each learning center will specify the required details.
- Diploma/admission letter (varies from center to center)
- Research proposal (varies from center to center)
- Photos (check the website of each learning center for details)
- Insurance certificate
- Application fee



# INTERNATIONAL PROGRAMS

The list below shows the international programs offered by the universities that have over 90% of the lessons taught in English.

## University

<b>Asia University</b>	MS   PHD   Biomedical Informatics
	MA   Biotechnology
	PHD   Business Administration (DBA)
	MS   PHD   Computer Science and Information Engineering
	MS   Healthcare Administration
	MBA   International Master of Business Administration (IMBA)
MS   Psychology	
<b>Chang Gung University</b>	MS   PHD   Department of Medical Imaging and Radiological Sciences
	PHD   Graduate Institute of Biomedical Sciences, Division of Biotechnology
	MMS   Graduate Institute of Dental and Craniofacial Science
	MS   Graduate Program in Molecular Medicine for Master's Degree
	BS   International Bachelor's Degree Program in Electrical and Computer Engineering
	MBA   School of Business (MBA)
<b>Chang Jung Christian University</b>	MA   Graduate School of Business and Operations Management in Global Management
	MA   Master Program for International Business
	BA   International Finance and Business Management
	MA   Taiwan Studies
<b>China Medical University</b>	MA   PHD   Department of Biological Science & Technology
	MA   PHD   Department of Nutrition
	MA   Department of Physical Therapy, Master program of Rehabilitation Science
	PHD   Department of Public Health
	MA   Graduate Institute of Acupuncture Science- International Master Program
	MA   PHD   Graduate Institute of Basic Medical Science
	MA   Graduate Institute of Cancer Biology
	MA   International Master Program of Biomedical Sciences
	MA   International Public Health Program



A VARIETY OF COURSES FOR YOU!

<b>Chinese Culture University</b>	MA   China Studies
	MA   Earth Science
	MA   English Language & Literature
	BA   MA   Global Business
	BA   PHD   Sport Coaching Science
<b>Chung Yuan Christian University</b>	MA   Department of Electrical Engineering International Master Program
	MBA   International Master of Business Administration
	MA   International Master Program for Membrane Material and Application
	MA   International Master Program in Department of Industrial and Systems Engineering
	MA   International Master Program in Information Technology and Cloud Computing
MA   International Master Program of Biomedical Material and Technology	
<b>Feng Chia University</b>	PHD   Civil and Hydraulic Engineering
	MA   Dual-Degree Master's Program in Logistics and Entrepreneurship Management
	PHD   Electrical and Communications Engineering
	MA   English Studies, Department of Foreign Languages and Literature
	MA   PHD   Environmental Engineering and Science
	PHD   Fiber and Composite Materials
	PHD   Information Engineering and Computer Science
	BA   International Business Administration (English Program) (BIBA)
	MBA   International Business Administration (IMBA)
	MA   PHD   Materials Science and Engineering
PHD   Mechanical and Aeronautical Engineering	
<b>Fu Jen Catholic University</b>	PHD   Department of Chemistry
	MA   Department of English Language and Literature
	PHD   Graduate Institute of Applied Science and Engineering
	PHD   Graduate Institute of Business Administration
	MA   MA Program in Brand and Fashion Management
	MBA   MBA Program in International Management (imMBA)
	MBA   MBA Program of Global Entrepreneurial Management and Business Administration
	PHD   Ph.D. Program in Nutrition and Food Sciences
<b>I-Shou University</b>	BA   Entertainment Management (EM)
	BA   International Business Administration (IBA)
	BA   International Finance (IF)
	MBA   International MBA (IMBA)
	BA   International Tourism and Hospitality (ITH)
	BA   School of Medicine for International Students
<b>Kainan University</b>	BA   International Honors Program
<b>Ming Chuan University</b>	BA   Applied Computing Program
	BA   MA   Applied English
	MBA   Graduate School of Business Administration
	MA   Graduate School of International Affairs
	BA   International Affairs and Diplomacy Program
	BA   International Business & Trade Program
	BA   International Finance Program
	BA   Journalism & Mass Communication Program
	BA   Travel & Tourism Program

<b>National Central University</b>	MA   PHD   Department of Atmospheric Sciences	
	PHD   Department of Business Administration	
	MA   PHD   Department of Chemical & Materials Engineering	
	MA   PHD   Department of Chemistry	
	MA   PHD   Department of Civil Engineering	
	MA   PHD   Department of Communication Engineering	
	MA   PHD   Department of Computer Science & Information Engineering	
	MA   PHD   Department of Earth Sciences- Graduate Institute of Geophysics	
	MA   PHD   Department of Electrical Engineering	
	MA   Department of English	
	PHD   Department of Finance	
	MA   PHD   Department of Life Sciences	
	MA   PHD   Department of Mathematics	
	MA   PHD   Department of Mechanical Engineering	
	MA   PHD   Department of Mechanical Engineering-Graduate Institute of Energy Engineering	
	MA   PHD   Department of Mechanical Engineering-Graduate Institute of Opto-mechatronics Engineering	
	MA   PHD   Department of Optics and Photonics	
	MA   PHD   Department of Physics	
	MA   Department of physics-Graduate Institute of Biophysics	
	MA   PHD   Graduate Institute of Applied Geology	
	MA   PHD   Graduate Institute of Astronomy	
	PHD   Graduate Institute of Biomedical Engineering	
	MA   PHD   Graduate Institute of Cognitive Neuroscience	
	MA   PHD   Graduate Institute of Construction Engineering & Management	
	MA   PHD   Graduate Institute of Environmental Engineering	
	MA   PHD   Graduate Institute of Human Resource Management	
	MA   PHD   Graduate Institute of hydrological & Oceanic Sciences	
	MA   PHD   Graduate Institute of Industrial Management	
	MA   PHD   Graduate Institute of Materials Science & Engineering	
	MA   PHD   Graduate Institute of Network Learning Technology	
	MA   PHD   Graduate Institute of Space Science	
	MA   PHD   Graduate Institute of Systems Biology and Bioinformatics	
	PHD   Interdisciplinary Neuroscience Ph.D. Degree Program	
	MA   International Master Degree Program in Applied Material Science	
	MA   International Master Program for Environment Sustainable Development	
	MA   International Master Program in Inter-Asia Cultural Studies	
	MS   M.S Program in Institute of Lighting and Display	
	MA   Master of Science Program in remote Sensing Science and Technology	
	PHD   Ph.D. Program in Hakka Studies, Department of Hakka Language and Social Sciences	
	PHD   University System of Taiwan International Graduate Program for Photonics	
	<b>National Cheng Kung University</b>	MA   PHD   Department of Aeronautics & Astronautics
		MA   PHD   Department of Civil Engineering
		PHD   Department of Computer Science & Information Engineering
		MA   PHD   Department of Electrical Engineering
		MA   PHD   Department of Environmental Engineering
		MA   PHD   Department of Foreign Languages & Literature
		MA   PHD   Department of Geomatics
MA   PHD   Department of Hydraulic & Ocean Engineering		
MA   PHD   Department of Materials Science & Engineering		

<b>National Chengchi University</b>	MSC   International Advanced Program in Nursing(IAPN)
	MA   PHD   Department of Physics
	PHD   Department of Resources Engineering
	MA   PHD   Department of Systems & Naval Mechatronic Engineering
	PHD   Department of Urban Planning
	MA   Institute of Allied Health Science
	MA   PHD   Institute of Bioinformatics & Biosignal Transduction
	MA   PHD   Institute of Biotechnology
	MA   PHD   Institute of Computer & Communication Engineering
	MA   PHD   Institute of Creative Industries Design
	MA   PHD   Institute of International Management
	MA   Institute of Medical Informatics
	MA   PHD   Institute of Microelectronics
	MA   Institute of Tropical Plant Sciences
	BA   International Bachelor Degree Program on Energy
	MA   International Master Program on Natural Hazards Mitigation and Management
	PHD   Nano-Micro Engineering Ph.D. Degree Program of the Department of Materials Science and Engineering
	MA   The International Curriculum for Advanced Materials Program (iCAMP)
	PHD   International Doctoral Program in Asia-Pacific Studies (IDAS)
	MBA   International Master of Business Administration Program (IMBA)
MA   International Master's Program in Applied Economics and Social Development (IMES)	
MA   International Master's Program in Asia-Pacific Studies (IMAS)	
MA   International Master's Program in International Communication Studies (IMICS)	
MA   International Master's Program in International Studies (IMPIS)	
<b>National Chiao Tung University</b>	MSC   PHD   EECS International Graduate Program (System On Chip Concentration;Telecom / Networking Concentration;Photonics/Biomedical Signal/Control Concentration)
	MBA   Global MBA (GMBA)
	MSC   PHD   Heterogeneous Integration and Microsystem Engineering Program
	MSC   International Master of Science Program for Interdisciplinary Molecular Science of Materials and Chemical Biology
	MA   International Master's Program in Inter-Asia Cultural Studies (UST)
	PHD   International PhD Program in Interdisciplinary Neuroscience (UST)
	PHD   International PhD Program in Photonics (UST)
	MSC   PHD   Precision Machinery and Semiconductor Equipment Program
	MSC   PHD   Solid-State Electronic Devices and Materials Program
	<b>National Chiayi University</b>
MA   Global Master Program of Teaching Profession	
MA   Global Master Program of Agricultural Science	
<b>National Chung Cheng University</b>	PHD   Doctoral Program in Cognitive Science
	MA   Educational Leadership and Management Development
	MA   International Master Program in Global Finance
	MA   Master of Science in Advanced Manufacturing Systems
<b>National Chung Hsing University</b>	MBA   PHD   Graduate Institute of Technology Management
	BS   International Bachelor Program of Agribusiness
	MS   International Master Program of Agriculture
	PHD   Molecular and Biological Agricultural Sciences(MBAS)
	PHD   The International PhD Program in Taiwan and Transcultural Studies
	MPS   Tricontinental Master Program in Global Studies

**National Dong Hwa University**

BA		Bachelor Program of Management Science and Finance
PHD		Department of Accounting
MA		Department of Arts and Creative Industries
MA		PHD   Department of Business Administration
MA		PHD   Department of Chemistry
BA		MA   PHD   Department of Computer Science & Information Engineering
BA		MA   Department of Counseling and Clinical Psychology
MA		PHD   Department of Curriculum Design & Human Potential Development
MA		PHD   Department of Economics
MA		PHD   Department of Electrical Engineering
BA		MA   Department of English
PHD		Department of Ethnic Relations and Cultures
BA		MA   PHD   Department of Finance
MA		PHD   Department of Information Management
MA		PHD   Department of International Business
PHD		Department of Life Science
MA		PHD   Department of Materials Science and Engineering
MA		PHD   Department of Natural Resources & Environmental Studies
MA		PHD   Department of Physics
MA		Department of Taiwan and Regional Studies
PHD		Department of Tourism, Recreation and Leisure Studies
MA		PHD   Graduate Institute of Logistics Management
MA		Humanity and Environmental Science Master Program
MA		Institute of Marine Biology
MA		Master Program in Asia-Pacific Area Studies

**National Kaohsiung Normal University**

MA		PHD   English Department
----	--	--------------------------

**National Sun Yat-sen University**

MA		International Master Program in Asia-Pacific Affairs
MA		International Master's Program in Electric Power Engineering
MA		Master of Business Administration Program in International Business
MA		Master of Global Human Resource Management
MA		Master Program in Telecommunication Engineering

**National Taichung University of Education**

MBA		International Master of Business Administration (IMBA)
-----	--	--

**National Taipei University**

MA		Executive Master of Business Administration in International Finance(IEMBA)
MBA		Global Master of Business Administration(GMBA)
MBA		International Program on Urban Governance

**National Taiwan Normal University**

PHD		Chemistry
MA		PHD   Earth Sciences
MA		PHD   Electro-optical Science and Technology
MA		PHD   English
MA		European Cultures and Tourism
MA		PHD   Information & Computer Education
MA		International Human Resource Management
MA		PHD   Mathematics
MA		PHD   Physics
PHD		Science Education

**National Taiwan University**

MA		PHD   Department of Agricultural Chemistry
----	--	--

MA		Department of Agricultural Economics, International Program
PHD		Department of Atmospheric Sciences
MA		PHD   Department of Bioenvironmental Systems Engineering
MA		PHD   Department of Chemical Engineering
MA		PHD   Department of Chemistry, Chemical Biology Division
MA		PHD   Department of Chemistry, Chemistry Division
MA		Department of Civil Engineering, Computer-Aided Engineering Division
MA		Department of Civil Engineering, Geotechnical Engineering Division
MA		Department of Civil Engineering, Structural Engineering Division
MA		Department of Civil Engineering, Transportation Engineering Division
MA		PHD   Department of Electrical Engineering
BA		MA   PHD   Department of Entomology
MA		PHD   Department of Forestry and Resource Conservation
PHD		Department of Geosciences
MA		Department of Geosciences, Applied Geology Division
MA		Department of Geosciences, Geology Division
MA		PHD   Department of Law
MA		PHD   Department of Life Science
MA		PHD   Department of Physical Therapy
PHD		Department of Physics
MA		PHD   Department of Plant Pathology and Microbiology
MBA		Global MBA(GMBA)
MA		PHD   Graduate Institute of Applied Mechanics
PHD		Graduate Institute of Applied Physics
PHD		Graduate Institute of Astrophysics
MA		PHD   Graduate Institute of Biomedical Electronics and Bioinformatics
MA		PHD   Graduate Institute of Biomedical Engineering
MA		PHD   Graduate Institute of Biotechnology
MA		PHD   Graduate Institute of Communication Engineering
MA		PHD   Graduate Institute of Ecology and Evolutionary Biology
PHD		Graduate Institute of Environmental Health
PHD		Graduate Institute of Epidemiology and Preventive Medicine
MA		PHD   Graduate Institute of Fisheries Science
PHD		Graduate Institute of Health Policy and Management
MA		PHD   Graduate Institute of Industrial Engineering
PHD		Graduate Institute of Molecular Medicine
MA		PHD   Graduate Institute of Musicology
MA		PHD   Graduate Institute of Networking and Multimedia
MS		PHD   Graduate Institute of Occupational Medicine and Industrial Hygiene
PHD		Graduate Institute of Oceanography
MA		Graduate Institute of Oceanography, Chemical Oceanography Division
MA		Graduate Institute of Oceanography, Marine Biology and Fisheries Division
MA		Graduate Institute of Oceanography, Marine Geology and Geophysics Division
MA		Graduate Institute of Oceanography, Physical Oceanography Division
MA		PHD   Graduate Institute of Photonics and Optoelectronics
PHD		Graduate Institute of Plant Biology
PHD		Graduate Institute of Polymer Science and Engineering
MA		PHD   Graduate Institute of Toxicology
MA		Graduate Program in Translation and Interpretation, Interpreting Track
MA		Graduate Program in Translation and Interpretation, Translation Track

<b>National Tsing Hua University</b>	MA   PHD   Institute of Astronomy
	MA   PHD   Institute of Nanoengineering and Microsystems
	PHD   Institute of Service Science
	MA   PHD   Institute of Technology Management
	MBA   International Master of Business Administration
	MA   International Master Program in Information Systems and Applications (ICDF)
	MA   International MBA Program in Technology Management (ICDF)
	PHD   International Ph.D. Program in Biomedical Engineering
	PHD   International Ph.D. Program in Information Systems and Applications (SNHCC)
	PHD   International Ph.D. Program in Low Carbon Energy
	MA   MA Program in Language Cognition & Teaching
	MA   MA Program in Western Literature
	PHD   Taiwan International Graduate Program (TIGP), Nano Science and Technology Program
<b>National United University</b>	MA   International Master Program of Intelligent Greentech
<b>National University of Kaohsiung</b>	MBA   International MBA (IMBA)
<b>National University of Tainan</b>	MA   Graduate Institute of Mechatronic System Engineering
	MA   Master program of Technology Management

<b>National Yang-Ming University</b>	MA   PHD   Institute of Biophotonics	
	MA   PHD   International Health Program	
<b>Providence University</b>	MBA   Graduate International Program-Master of Business Administration	
	MS   Graduate International Program-Master of science in computing and informatics	
	BA   International Business Administration Program	
<b>Soochow University</b>	MBA   Global Business Program (MBA)	
<b>Tamkang University</b>	BA   Diplomacy and International Relations	
	BA   MA   PHD   English	
	BA   English Language and Culture	
	MA   English Master's Program, Department of Computer Science and Information Engineering	
	BA   Global Financial Management	
	BA   Global Politics and Economics	
	MA   PHD   Graduate Institute of the Americas, Division of American Studies	
	BA   Innovative Information and Technology, Division of Applied Information	
	BA   Innovative Information and Technology, Division of Software Engineering	
	BA   International Business, Division of Global Commerce Management	
	MA   International Master's Program in Taiwan and Asia-Pacific Studies at College of International Studies	
	BA   International Tourism Management	
	<b>Tunghai University</b>	MA   International Architecture Design
		BA   International Business Administration (IBA)
	<b>University of Kang Ning</b>	MA   International Master's Program for Leisure Management (IMPLM)
<b>University of Taipei</b>	MED   PHD   Education Administration and Evaluation	
	BA   MA   English Instruction	
	BFA   MFA   MED   Music	
	BS   MS   Recreation and Sport Management	
	MS   Sports Equipment Technology	
	MS   PHD   Sports Sciences	
	<b>Yuan Ze University</b>	PHD   Doctor of Philosophy Program in Finance
PHD   Doctor of Philosophy Program in Management		
BA   English Bachelor of Business Administration Program in Global Business Management Concentration		
BA   English Bachelor of Business Administration Program in International Finance Concentration		
MA   MBA Program in International Business		
MA   MBA Program in Leadership		
MA   MBA Program in Management and Service Science		
MA   MBA Program in Marketing		
MS   MS Program in Accounting		
MS   MS Program in Finance		



## Technological University

### Chaoyang University of Technology

BA   MBA   Bachelor/Master Program in Business Administration
MA   Master Program in Architecture and Urban Design
MA   Master Program in Biochemical Technology
MA   Master Program in Finance
MA   Master Program in Information Technology
MBA   MBA
PHD   Ph.D. Program in Biochemical Technology
PHD   Ph.D. Program in Construction Engineering
PHD   Ph.D. Program in Information Technology

### Kun Shan University

BA   International Bachelor Program in Mechanical Engineering
MBA   International Master Program in Business Administration
MA   International Master Program in Mechanical Engineering
PHD   Ph.D. Program of Mechanical Engineering

### Lunghwa University of Science and Technology

BA   International Business Management Program
MBA   International Master of Business Administration Program

### Meiho University

BA   Bachelor of Business Administration
BA   Bachelor of Food Science and Nutrition
MA   Graduate Institute of Business and Management
MA   Graduate Institute of Health Care



### National Formosa University

MA   Institute of Business and Management
MA   PHD   Institute of Mechanical Engineering and Electro-Mechanical Engineering

### National Kaohsiung First University of Science and Technology

MBA   International Master of Business Administration
---

### National Kaohsiung University of Applied Science

BA   Applied Foreign Languages
MA   English Professional Communication and Instructional Technology

### National Taipei University of Technology

PHD   International Graduate Program in College of Mechanical and Electrical Engineering (CMEE)
MA   PHD   International Graduate Program in Electrical Engineering and Computer Science (EECS)
MA   PHD   International Graduate Program in Energy & Optoelectronic Materials Program (EOMP)
MBA   International Master Program in Business Administration (IMBA)
MA   International Master Program in Mechanical and Automation Engineering

### National Taiwan University of Science and Technology

BA   PHD   MA   Department of Applied Foreign Languages
MS   PHD   Department of Chemical Engineering
MS   PHD   Department of Civil and Construction Engineering
MS   PHD   Department of Computer Science and Information Engineering
MS   PHD   Department of Electrical Engineering
MS   PHD   Department of Electronic and Computer Engineering
MBA   PHD   Department of Industrial management
MIM   PHD   Department of Information Management
MS   PHD   Department of Materials Science and Engineering
MS   PHD   Department of Mechanical Engineering
MS   PHD   Graduate Institute of Applied Science and Technology (including Doctoral program of Biomedical Engineering )
MS   PHD   Graduate Institute of Automation and Control
MS   Graduate Institute of Biomedical Engineering
MS   Graduate Institute of Color and Illumination Technology
MS   PHD   Graduate Institute of Digital Learning and Education
MS   PHD   Graduate Institute of Electro-Optical Engineering
MS   Graduate Institute of Finance
MS   International Master Student Program for Globalization of Taiwan Enterprise
MBA   MBA Program

### National Yunlin University of Science and Technology

MA   Applied Foreign Language
MA   Finance
MBA   International Business Administration (IMBA)

### TaHwa University of Science and Technology

BA   International Communication Studies (IMICS)
BA   Mechatronics Engineering Integration Program

### Wenzao Ursuline University of Languages

BA   Department of English
BA   Department of Foreign Language Instruction
MA   Master's Degree Program of International Affairs

# VISA & ARRIVAL INFORMATION

## Visa

Students applying from abroad who have received a formal letter of admission should apply for a visa to enter Taiwan at the nearest R.O.C. embassy, consulate, or representative agency. Students may be issued a visitor visa or a resident visa, depending on the length of their study program. Students admitted to a degree program will need to apply for a resident visa. If you intend to stay for more than 6 months to study, you should apply for a resident visa.

## Required Documents

You will need the following documents:

- A completed application form with two passport-size color photos taken within the last 6 months
- A passport valid for at least 6 months and a photocopy of it (the passport should have enough empty pages)
- An admission letter issued by a college, university, or language center in Taiwan
- Proof of financial support
- Any other documents required by the college, university, or language center
- Application fee

## Further Information About Visas

### Visitor Visa

Foreign nationals who hold a valid passport or other legal travel document, and who intend to stay in the Republic of China (Taiwan) for less than 6 months, may apply for a visitor visa. Students holding a visitor visa who wish to stay more than 6 months should apply to change their visa to a resident visa at the Bureau of Consular Affairs, Ministry of Foreign Affairs (MOFA).

### Resident Visa

Foreign nationals who hold a valid passport or other legal travel document, and who intend to stay in the Republic of China (Taiwan) for more than 6 months, may apply for a resident visa.

### Visa Extension

Students who hold a visitor visa and wish to stay less than 6 months are not required to change their visa status. But a student who intends to stay beyond the date when their current visa expires needs to apply for a visa extension through the National Immigration Agency before their visa expires.

## Alien Resident Certificate (ARC)

Resident Visa holders are required to apply for an Alien Resident Certificate and Re-entry Permit at the local office of The Immigration Agency within 15 days after their arrival. They may stay in the R.O.C. as long as their Alien Resident Certificate remains valid.

## Required Documents

You will need the following documents:

- A completed application form
- Passport with a valid Resident Visa
- Student ID card or Enrollment Verification (original and a photocopy). Overseas Chinese students who are first-time applicants must submit a notification of enrollment. They will be issued a 30-day ARC by the National Immigration Agency. A student ID or enrollment verification will be needed to extend the 30-day ARC
- One passport-sized color photo taken in the past six months
- Student ID (original and a photocopy)
- Application fee
- Health certificate - dated within the last 3 months

## ARRIVAL INFORMATION

There are four international airports in Taiwan: Taiwan Taoyuan International Airport, in Taoyuan city (about 40km from Taipei city), Taipei Songshan Airport, Taichung Airport, located in the central part of Taiwan, and Kaohsiung International Airport, located in southern Taiwan. Most international flights land at Taiwan Taoyuan International Airport. Students can take long distance highway buses from Taiwan Taoyuan International Airport to major cities, such as Taipei, Taichung, and Kaohsiung. Students can then easily get a transfer to their college or university by bus, metro, train, or taxi in these cities. Taxis are also available at the airports.

## Entry & Exit

### Required Documents

The following documents are needed:



### Entry

- A completed visitor visa / resident visa application form
- A valid visitor visa / resident visa
- A passport valid for at least six months
- A confirmed return air ticket or an air ticket and a visa for the next destination, and a confirmed seat reservation on the departure flight



### Exit

- Each student is required to show a passport and Alien Resident Certificate to the Customs authorities
- Students should depart before their visa expires



### Re-entry

- Each student is required to show a passport and Alien Resident Certificate to Customs authorities
- Students are required to apply for a re-entry permit from the authorities before they leave Taiwan and to show it to Customs officials when they re-enter

## NOTE

If your spouse and children are coming with you, please bring along a notarized marriage certificate and birth certificates when you lodge the application

## NOTE

For more information about applying for visas and an ARC, please go to:  
Living in Taiwan (Information for Foreigners)  
[iff.immigration.gov.tw](http://iff.immigration.gov.tw)  
Bureau of Consular Affairs Ministry of Foreign Affairs (BOCA)  
[www.boca.gov.tw](http://www.boca.gov.tw)

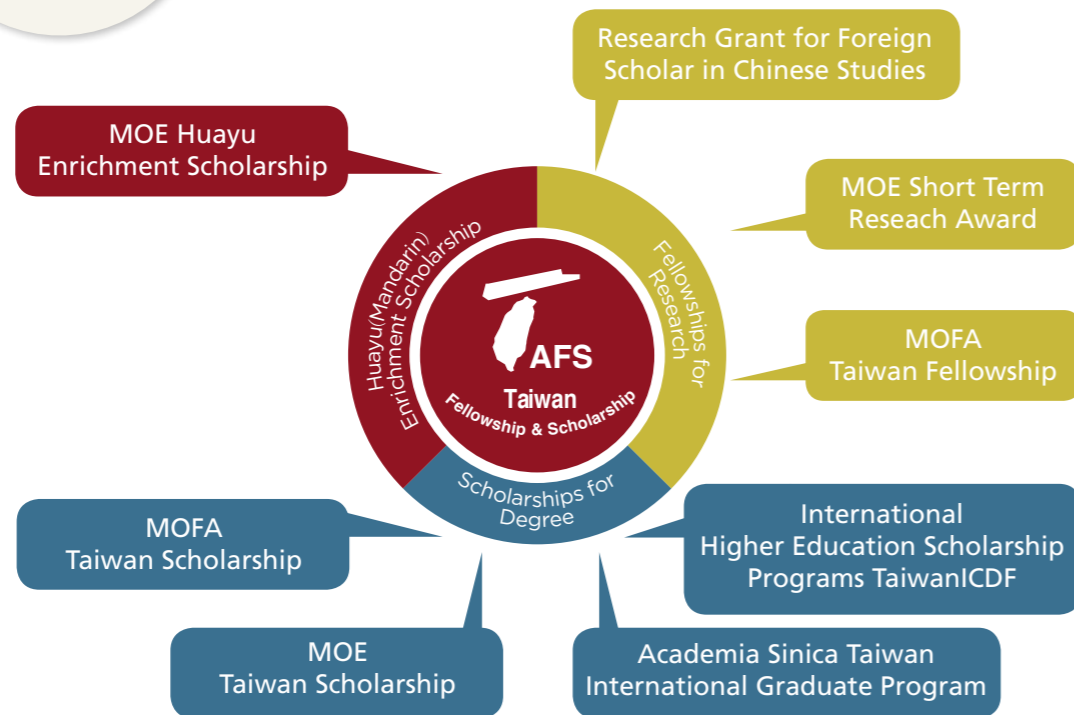


# SCHOLARSHIPS

## Taiwan Fellowships & Scholarships (TAFS)

The Taiwan Fellowships & Scholarships (TAFS) program is a Republic of China (R.O.C.) government initiative aimed to promote research, educational links, and enduring friendships between Taiwan and the global community. The TAFS program comprises 8 awards in 3 categories: 1. Research Fellowships, 2. Huayu (Mandarin) Enrichment Scholarships, and 3. Scholarships to undertake degree studies. Approximately 1,200 awards are provided annually for undergraduate students, postgraduate students, and researchers from across the world to study or conduct advanced research in Taiwan.

Let's apply for Taiwan scholarships



For more information, please visit the Taiwan Fellowships & Scholarships (TAFS) website at [tafs.mofa.gov.tw](http://tafs.mofa.gov.tw)



MEET YOUR FRIENDS AFTER CLASS!!

## VARIOUS TYPES OF TAIWAN SCHOLARSHIPS



Category	Program Title	Details
Scholarships for Degree Studies (undergraduate or postgraduate)	<b>MOE</b> Huayu Enrichment Scholarship	<ul style="list-style-type: none"> <li>Duration: summer classes (2 months), 3, 6, or 9 months, or 1 year</li> <li>Monthly stipend: NTD25,000</li> <li>For recipients from eligible countries designated by the MOE</li> </ul>
	<b>MOFA</b> Taiwan Scholarship	<ul style="list-style-type: none"> <li>Duration: undergraduate (max. 4 years), master's (max. 2 years), Ph.D. (max. 4 years), pre-degree Mandarin language program (max. 1 year) available</li> <li>Monthly stipend: NTD30,000</li> <li>*LEP monthly stipend: NTD25,000</li> <li>One direct round-trip economy-class ticket</li> <li>For recipients from countries with diplomatic ties with the R.O.C.</li> </ul>
	<b>MOE</b> Taiwan Scholarship	<ul style="list-style-type: none"> <li>Duration: undergraduate program (max. 4 years), master's (max. 2 years), Ph.D. (max. 4 years)</li> <li>Monthly stipend: NTD15,000 for undergraduate programs, NTD20,000 for master's or Ph.D. programs.</li> <li>Waiver of tuition and certain fees</li> <li>Recipients can only study at universities participating in the Taiwan Scholarship Program</li> <li>For recipients from eligible countries designated by the MOE</li> </ul>
	<b>Academia Sinica</b> Taiwan International Graduate Program	<ul style="list-style-type: none"> <li>Duration: Ph.D. program (max. 3 years)</li> <li>Monthly stipend: NTD32,000</li> <li>Recipients can only be enrolled in one of the highly specialized interdisciplinary Ph.D. programs run in collaboration with research universities in Taiwan</li> <li>Fields: life science, mathematics, and earth system science</li> </ul>
	<b>TaiwanICDF</b> International Higher Education Scholarship Programs	<ul style="list-style-type: none"> <li>Duration: undergraduate (max. 4 years), master's (max. 2 years), Ph.D. (max. 4 years)</li> <li>Monthly stipend: NTD12,000 for undergraduate programs, NTD15,000 for master's programs, NTD17,000 for Ph.D. programs.</li> <li>Book costs, credit fees, tuition fees, housing, and insurance are covered</li> <li>Fields: mainly agriculture, medicine, engineering, business administration, and technology</li> <li>Recipients can only be enrolled in one program in collaboration with the TaiwanICDF and an associated university in Taiwan</li> <li>One direct round-trip economy-class ticket</li> <li>Recipients must be from countries with diplomatic ties with the R.O.C. and certain developing countries</li> </ul>

\*LEP: The non-degree Mandarin language enrichment program

\*(USD1 ≙ NTD30)

## VARIOUS TYPES OF TAIWAN FELLOWSHIPS



Category	Program Title	Details
Fellowships for Research	<b>MOFA</b> Taiwan Fellowship	<ul style="list-style-type: none"> <li>Duration: min. 3 months, max. 1 year</li> <li>Monthly stipend: NTD60,000 for professors, associate professors, research fellows, and associate research fellows; NTD50,000 for assistant professors, assistant research fellows, post-doctoral researchers, doctoral candidates, doctoral program students, and others</li> <li>Fields: social sciences or humanities related to Taiwan, cross Taiwan Strait relations, mainland China, and the Asia Pacific region or other aspects of sinology</li> <li>One direct round-trip economy-class ticket (up to the subsidy maximum)</li> </ul>
	<b>MOE</b> Short Term Research Award	<ul style="list-style-type: none"> <li>Duration: min. 2 months, max. 6 months</li> <li>Monthly grant: NTD25,000 for Ph.D. candidates, NTD40,000 for post doctoral fellows</li> <li>Fields: Taiwanese culture, social sciences and related comparative research</li> <li>One direct round-trip economy-class ticket (up to the subsidy maximum)</li> </ul>
	<b>Center for Chinese Studies</b> Research Grant for Foreign Scholars in Chinese Studies	<ul style="list-style-type: none"> <li>Duration: min. 3 months, max. 1 year</li> <li>Monthly grant: NTD60,000 for professors, NTD50,000 for associate professors, and NTD40,000 for assistant professors and doctoral candidates. Grants for research fellows will be awarded based on their corresponding level</li> <li>Field: Chinese studies and Taiwan studies</li> <li>One direct round-trip economy-class ticket (up to the subsidy maximum)</li> </ul>
Other Awards	Taiwan Foundation for Democracy's Fellowships	<ul style="list-style-type: none"> <li>Duration: max. 1 year 4 categories: Dissertation Fellowships - for Ph.D. candidates writing their thesis; Postdoctoral Fellowships - for those who have recently received their Ph.D.; Democracy and Human Rights Service Fellowships - for those who want to be involved in democracy and human rights projects in Taiwan; and International Visiting Fellowships - for experienced democracy and human rights advocates</li> <li>Field: human rights or democracy</li> <li>One direct round-trip economy-class ticket</li> <li>Monthly grant: to be determined individually by the Taiwan Foundation for Democracy</li> </ul>
	Grants from the Chiang Ching-Kuo Foundation for International Scholarly Exchange	<ul style="list-style-type: none"> <li>Offers differ depending on where the application is filed, the applicant (a scholar, academic institution or senior scholar) and the project type (conferences, workshops, publications, research projects, doctoral theses or postdoctoral studies). Please refer to the Chiang Ching-kuo Foundation for International Scholarly Exchange website for detailed information</li> <li>Fields: Chinese culture, sinology, and all aspects of the development of the R.O.C. (from its foundation to the present day)</li> </ul>

## Applications

Program Title	Application Date
MOE Huayu Enrichment Scholarship	February 1 to March 31
MOE Taiwan Scholarship	February 1 to March 31
MOFA Taiwan Scholarship	February 1 to March 31
Academia Sinica Taiwan International Graduate Program (TIGP)	From the announcement date to March 31 of the following year
International Higher Education Scholarship Programs of TaiwanICDF	January 1 to March 15
MOE Short Term Research Award	Before the end of September
MOFA Taiwan Fellowship	May 1 to June 30
Grants from the Chiang Ching-Kuo Foundation for International Scholarly Exchange	Please visit the official website for details
Research Grant for Foreign Scholars in Chinese Studies	Before May 31
Taiwan Foundation for Democracy's Fellowships	Please visit the official website for details

For more detailed information about the Taiwan Scholarship and Huayu Enrichment Scholarship programs, please visit the official website or contact a Taiwan Representative Office directly.

See P.44~P.45 for the contact details of the nearest embassy or representative office.



STUDY HARD  
PLAY HARDER!

## Further Information About Scholarships & Fellowships

- 1 Center for Chinese Studies  
ccs.ncl.edu.tw
- 2 Chiang Ching-kuo Foundation for International Scholarly Exchange  
www.cckf.org.tw
- 3 Ministry of Education (MOE)  
english.moe.gov.tw
- 4 Ministry of Foreign Affairs (MOFA)  
www.mofa.gov.tw
- 5 Taiwan Foundation for Democracy  
www.tfd.org.tw
- 6 Taiwan Scholarship and Huayu Enrichment Scholarship Program  
taiwanscholarship.moe.gov.tw
- 7 TaiwanICDF  
www.icdf.org.tw
- 8 TIGP  
tigp.sinica.edu.tw

# LIVING IN TAIWAN

- Accommodation
- Living Costs
- Services
- Job Opportunities
- Taiwan Hostfamily Program



# ACCOMMODATION

## On-campus Accommodation

On-campus undergraduate dormitories are divided based on gender and are open to students all year-round. Typically, four to six students share a room. Pets are not usually allowed. The expenses are about NTD6,000 to 10,000 (about USD200-330) per semester. University students usually wear something casual to class. Coin-operated laundromats can be found inside dormitory buildings. Meals at on-campus dining halls cost NTD40-130 (about USD1-4). Food stalls, cafes and inexpensive restaurants can usually be found close to campuses, typically within easy walking distance.

Some campuses have on-campus health centers, which provide medical assistance for minor ailments. Some colleges and universities have a post office, a bookstore and a bank on campus.

## Off-campus Accommodation

If there are no dormitories available or if you prefer a different living arrangement, off-campus apartments, studios, and flats are available. Most Chinese learning centers provide information about local rentals on the internet. Rent ranges from NTD 3,000 to 13,000 per month (about USD95-410), depending on the type, quality, and location of the accommodation.

## Living Costs

The New Taiwan dollar is the official currency of Taiwan. The currency code is TWD and this is commonly abbreviated as NT\$ or NTD. The most commonly used denominations are the NTD100, NTD500, and NTD 1000 bills. There are also NTD200 and NTD2000 bills in circulation but you will very rarely encounter them. The coins used are the NTD50, NTD10, NTD5, and NTD1 denominations. Cash payment is common in Taiwan though many shops do accept credit cards. Checks are not normally used in Taiwan for payment of everyday expenses.

Apart from your tuition fees, your accommodation costs will be your biggest financial burden. It's worth doing some research before you arrive about your accommodation options, and remember to include the cost of things such as utilities (electricity, gas, water, telephone), public transportation, food and so on. The cost of many things might vary depending on the area you'll be living in.

**NOTE**  
For further information about off-campus accommodation, please go to the Tsuei Ma-Ma Foundation website. [www.tmm.org.tw](http://www.tmm.org.tw)

**Daily Goods**  
Taiwan is well-known as one of the countries with a cheaper cost of living, but with a high quality of living. A few examples of the prices of goods are given here. You can exchange major currencies at banks handling foreign currency exchange.

Item	Price (NTD)	Price (USD)
Bread (a loaf)	50	1.67
Milk (1800ml)	150	5
Coca Cola (600ml plastic bottle)	30	1
Cabbage (1 kg)	39	1.3
Rice (2kg)	120	4
Gasoline (1L)	34	1.1
Taxi (1.25km)	70	2.3
Eggs (10 eggs)	40	1.33
Movie Ticket	260	8.67
Hamburger	70	2.3

\*(USD1 ≈ NTD30)

# SERVICES

Start collecting the beautiful Taiwanese postage stamps!

## Bank Accounts

Most banks offer foreign currency exchange and bank services in NT dollars. International students can open bank accounts with their passport and ARC card. An individual who wants to open an account without an ARC card needs to get a universal identification number at the local police office.

## Postage

Chunghwa Post, the postal service of Taiwan, provides international and domestic mail services to the public. There are over a thousand branches distributed all over the island, providing regular and express postal services. International students can apply for a postal box at the nearest post office branch. Students who receive Taiwan Scholarship need to open an account at a post office.

In addition, most convenience stores also serve as pick up locations for international and domestic express services.

## Insurance

International students with an Alien Resident Certificate (ARC) who have resided in Taiwan for 6 months must enroll in the National Health Insurance (NHI) program at a local administrative office. Before they become eligible for the NHI program, students can purchase their own insurance or participate in a temporary health insurance program offered by the international students' office at their educational institution. The insurance premium has to be paid monthly once registration is completed. The cost of NHI is included in the tuition fee every semester. Once registered with the National Health Insurance, you will only need to pay 60% of any medical bill.

International students who enroll in the NHI program should apply for the NHI IC card. Students can fill in the "NHI IC Card Application Form," and attach a photocopy of your identity document, then mail it or bring it in person to a nearby NHI branch office or liaison office. You will need the following documents: the application form, your passport, and ARC, and two one-inch photos.

## Job Opportunities

International students who have attended a college or university in Taiwan or language program for one year and who have an excellent academic record can work in Taiwan when one of the following applies:

- Events of a serious nature have affected their financial ability to support themselves or continue their education, and the student can provide evidence of such circumstances
- An academic research institution at the student's school requires a foreign student to provide assistance in its work
- The student needs to take part in an off-campus internship related to his or her field of study

International students who wish to work in Taiwan are required to apply for and obtain a work permit before starting work. For more details, please visit the Workforce Development Agency website at [www.wda.gov.tw](http://www.wda.gov.tw)

### Further information about National Health Insurance (NHI):

The NHI has provided health insurance for all people in Taiwan since 1995. The main goals are to improve patients' access to health care by easing the financial burden and to make sure that no one would be forced into bankruptcy by a serious illness.  
[www.nhi.gov.tw](http://www.nhi.gov.tw)

## Transportation

### Train



The railway network along the coastline is an economic way to travel around Taiwan. Traveling by train is recommended on public holidays because it can avoid the hustle and bustle of the long distance highway bus service. Reserving your ticket in advance is recommended.

### Highway Buses



The long distance highway bus services provided by private transportation companies are very popular. They have an extensive network and a frequent service schedule. Tickets are usually competitively priced and some bus companies even provide a 24-hour service.

### Air



There are five domestic airlines providing services between major cities such as Taipei, Taichung, Tainan, Kaohsiung, and Hualien. Prior reservations are always required.

### Taiwan High Speed Rail (THSR)



If you would like to save time, THSR is another good choice. Traveling from Taipei to Kaohsiung takes 5 hours by train and 6 hours by car, but the THSR takes only 1.5 hours. Advanced reservations are recommended.

### Motorcycles, Scooters & Bicycles



Motorcycles and scooters are very popular means of transportation. Most universities provide motorcycle and scooter parking around campus for students. Bicycles are widely used within campuses and bicycle racks can be found throughout campuses.

### Cars



In Taiwan, cars drive on the right-hand side of the road. Students with an international driver license may drive in Taiwan. Nevertheless, driving is not recommended for those who are unfamiliar with the unique road and traffic conditions in Taiwan. All drivers have to be extra cautious. Traffic is heavy and car drivers must constantly watch out for slow-moving pedestrians and bicyclists, fast-moving motorcycles and scooters, as well as other cars, buses, and trucks. International or foreign driver license holders can apply for ROC driver licenses at the local Motor Vehicles Office.

### Metro/Subway



In Taipei and Kaohsiung, a metro system (MRT) provides convenient and comfortable transportation. There are five major routes in Taipei and two major routes in Kaohsiung, covering different parts of the two cities. Metro fares range from NTD20-65 (about USD0.6-2).

### Buses & Taxis



Each major city has its own bus system. Fares are inexpensive and services are frequent. Taxi fares start at NTD 70 (about USD 2.3) and increase with the time and distance traveled. It is a good idea to have the name of your hotel or address written in Chinese when you travel by taxi.

HOW CONVENIENT!!

# STAY WITH A HOST FAMILY

## Taiwan Hostfamily Program

The purpose of the Taiwan Hostfamily Program is to give international students a more personal, first-hand experience in Taiwan. Living with a host family will not only give international students a chance to see Taiwanese family life for themselves, but will also allow them to build special relationships during their time here.

The Taiwan Hostfamily Program currently offers three different homestay options:

1. Friendship Only – this doesn't include overnight stays
2. Weekend Experience – for 2 or 3 days at a time
3. Short-term Experience – for 1 or 2 weeks as part of a short-term study program

The host families are all volunteers, there is generally no fee for staying short-term (up to two weeks) with a host family.

To learn more about staying with a host family, please visit [hostfamily.org.tw/English](http://hostfamily.org.tw/English)



# ADDITIONAL INFORMATION

- Useful Links
- Chinese Language Centers
- Test of Chinese as a Foreign language (TOCFL)



# USEFUL LINKS

## Taiwan Cultural and Trade Offices Abroad

These offices have information and application materials for studying in Taiwan and will gladly answer any additional questions you may have.

### North America

<b>Canada</b>	Education Division, Taipei Economic and Cultural Office in Canada t: +1-613-231-4909 f: +1-613-231-7508 e: canada@mail.moe.gov.tw www.taiwan-canada.org/tecoedu
	Education Division, Taipei Economic and Cultural Office in Vancouver t: +1-604-689-4111 f: +1-604-689-8086 e: vancouver@mail.moe.gov.tw www.taiwanembassy.org/CA/YVR
<b>USA</b>	Education Division, Taipei Economic and Cultural Representative Office in the United States t: +1-202-895-1918 f: +1-202-895-1922 e: usa@mail.moe.gov.tw www.moetwdc.org
	Education Division, Taipei Economic and Cultural Office in Boston t: +1-617-737-2055 f: +1-617-951-1312 e: boston@mail.moe.gov.tw www.moebos.org
	Education Division, Taipei Economic and Cultural Office in Chicago t: +1-312-616-0805 f: +1-312-616-1499 e: chicago@mail.moe.gov.tw www.edutw.org
	Education Division, Taipei Economic and Cultural Office in Houston t: +1-713-871-0851 f: +1-713-871-0854 e: houston@mail.moe.gov.tw www.moetw.org
	Education Division, Taipei Economic and Cultural Office in Los Angeles t: +1-213-385-0512 f: +1-213-385-2197 e: losangeles@mail.moe.gov.tw www.tw.org
	Education Division, Taipei Economic and Cultural Office in New York t: +1-212-317-7388 f: +1-212-317-7390 e: newyork@mail.moe.gov.tw www.edutwny.org
	Education Division, Taipei Economic and Cultural Office in San Francisco t: +1-415-398-4979 f: +1-415-398-4992 e: sanfrancisco@mail.moe.gov.tw www.tweducation.org

### Central & South America

<b>Paraguay</b>	Oficina del Consejero de Educación Embajada de la República de China (Taiwán) en Paraguay t: +595-21-213361 ext128,122 f: +595-21-207107 e: paraguay@mail.moe.gov.tw www.roc-taiwan.org/py
-----------------	---



### Europe

<b>Austria</b>	Education Division, Taipei Economic and Cultural Office in Austria t: +43-1-2124720 ext88,62 f: +43-1-5126083 e: vienna@mail.moe.gov.tw www.taiwanembassy.org/AT
<b>Belgium</b>	Education Division, Taipei Representative Office in the EU and Belgium t: +32-2-5110687 f: +32-2-5021707 e: belgium@mail.moe.gov.tw www.taiwanembassy.org/be
<b>France</b>	Bureau de Représentation de Taipei en France Service Education t: +33-1-44398847 f: +33-1-44398873 e: france@mail.moe.gov.tw www.edutaiwan-france.org
<b>Germany</b>	Taipeh Vertretung in der Bundesrepublik Deutschland Abteilung für Bildung t: +49-30-2036-1361 f: +49-30-2036-1362 e: germany@mail.moe.gov.tw www.roc-taiwan.org/de
<b>Poland</b>	Education Division, Taipei Economic and Cultural Office in Warsaw t: +48-22-2130080 f: +48-22-5407017 e: poland@mail.moe.gov.tw www.taiwanembassy.org/PL
<b>Russian Federation</b>	Education Division, Representative Office in Moscow for the Taipei-Moscow Economic and Cultural Coordination Commission t: +7-495-7379246 f: +7-495-7379245 e: russia@mail.moe.gov.tw www.taiwanembassy.org/ru
<b>Sweden</b>	Education Division, Taipei Mission in Sweden t: +46-8-328200 f: +46-8-328240 e: sweden@mail.moe.gov.tw www.taiwanembassy.org/SE
<b>U.K</b>	Education Division, Taipei Representative Office in the U.K. t: +44-20-74365888 f: +44-20-74362605 e: london@mail.moe.gov.tw www.roc-taiwan.org/UK

### Asia & Pacific

<b>Australia</b>	Education Division, Taipei Economic and Cultural Office in Australia t: +61-2-61201020 f: +61-2-62734560 e: australia@mail.moe.gov.tw www.taiwanembassy.org/au/edu
<b>Hong Kong</b>	Taipei Economic and Cultural Office in Hong Kong t: +852-21602050 f: +852-25252939 e: hongkong@mail.moe.gov.tw
<b>India</b>	Education Division, Taipei Economic and Cultural Center in New Delhi t: +91-11-26150230 f: +91-11-26150226 e: india@mail.moe.gov.tw
<b>Indonesia</b>	Taipei Economic and Trade Office in Jakarta t: +62-21-5553939 ext630 f: +62-21-5154628 e: Indonesia@mail.moe.gov.tw www.roc-taiwan.org/id
<b>Japan</b>	Education Division, Taipei Economic and Cultural Representative Office in Japan t: +81-3-32807836 ext39 f: +81-3-32807925 e: japan@mail.moe.gov.tw www.roc-taiwan.org/JP
	Taipei Economic and Cultural Office in Osaka t: +81-6-64438485 f: +81-6-64592390 e: osaka@mail.moe.gov.tw www.taiwanembassy.org/JP/OSA
	Taipei Economic and Cultural Office in Fukuoka t: +81-92-7342810 f: +81-92-7342819 e: fukuoka@mail.moe.gov.tw www.taiwanembassy.org/JP/FUK
<b>Korea</b>	Education Division, Taipei Mission in Korea t: +82-2-3992758 f: +82-2-3992792 e: korea@mail.moe.gov.tw www.studyintaiwan.go.kr
<b>Malaysia</b>	Education Division, Taipei Economic and Cultural Office in Malaysia t: +60-3-21615499 ext154 f: +60-3-21619228 e: malaysia@mail.moe.gov.tw www.taiwanembassy.org/MY
<b>Thailand</b>	Taipei Economic and Cultural Office in Thailand t: +66-2-6700200 ext326 f: +66-2-6700220 e: thailand@mail.moe.gov.tw www.taiwanembassy.org/TH
<b>Vietnam</b>	Taipei Economic and Cultural Office in Ho Chi Minh City t: +84-8-39651562 f: +84-8-39651563 e: tweduvn@gmail.com www.tweduvn.org



# CHINESE LANGUAGE CENTERS

## NORTH

### 1. Taipei

- **China University of Science and Technology**  
Language Center  
[aca.cust.edu.tw/language/chinese](http://aca.cust.edu.tw/language/chinese)
- **Chinese Culture University**  
Mandarin Learning Center  
[mlc.sce.pccu.edu.tw](http://mlc.sce.pccu.edu.tw)
- **Ming Chuan University**  
Mandarin Studies & Culture Center  
[mscc.mcu.edu.tw/en](http://mscc.mcu.edu.tw/en)

- **National Chengchi University**  
Chinese Language Center  
[mandarin.nccu.edu.tw/english](http://mandarin.nccu.edu.tw/english)
- **National Taipei University of Education**  
Chinese Language Education Center  
[r9.ntue.edu.tw](http://r9.ntue.edu.tw)
- **National Taiwan Normal University**  
Mandarin Training Center  
[www.mtc.ntnu.edu.tw](http://www.mtc.ntnu.edu.tw)
- **National Taiwan University**  
Chinese Language Division, Language Center  
[cld.liberal.ntu.edu.tw/en/](http://cld.liberal.ntu.edu.tw/en/)
- **National Taiwan University**  
International Chinese Language Program  
[iclp.ntu.edu.tw](http://iclp.ntu.edu.tw)

- **Soochow University**  
Chinese Language Center  
[mandarin.scu.edu.tw/bin/?Lang=en](http://mandarin.scu.edu.tw/bin/?Lang=en)
- **Taipei Chengshih University of Science and Technology**  
Mandarin Center  
[www.ieec.tpcu.edu.tw](http://www.ieec.tpcu.edu.tw)
- **Tamkang University**  
Chinese Language Center  
[www.dce.tku.edu.tw](http://www.dce.tku.edu.tw)

### 2. New Taipei City

- **Fu Jen Catholic University**  
Language Center  
[www.lc.fju.edu.tw](http://www.lc.fju.edu.tw)

### 3. Keelung

### 4. Taoyuan

- **Chung Yuan Christian University**  
Mandarin Learning Center  
[mlc.cycu.edu.tw](http://mlc.cycu.edu.tw)
- **Kainan University**  
Chinese Learning Center  
[www.knu.edu.tw/CLC](http://www.knu.edu.tw/CLC)
- **Lunghwa University of Science and Technology**  
Chinese Language Center  
[www.ctc.lhu.edu.tw/lctc](http://www.ctc.lhu.edu.tw/lctc)
- **National Central University**  
Language Center  
[www.lc.ncu.edu.tw/main/clp/english/index.php](http://www.lc.ncu.edu.tw/main/clp/english/index.php)

### 5. Hsinchu

- **Chung Hua University**  
Mandarin Training Center  
[international.chu.edu.tw/](http://international.chu.edu.tw/)
- **National Chiao Tung University**  
Chinese Language Division, LTRC  
[mandarin.nctu.edu.tw](http://mandarin.nctu.edu.tw)

### 6. Yilan

- **Fo Guang University**  
Chinese Language Instruction Center  
[www.fgu.edu.tw/~chinlang/clc.htm](http://www.fgu.edu.tw/~chinlang/clc.htm)

## CENTRAL

### 7. Miaoli

### 8. Taichung

- **Feng Chia University**  
Chinese Language Center  
[www.clc.fcu.edu.tw](http://www.clc.fcu.edu.tw)
- **National Chung Hsing University**  
Chinese Program  
[cp.nchu.edu.tw/](http://cp.nchu.edu.tw/)
- **National Taichung University of Education**  
Chinese Language Center  
[clc.ntcu.edu.tw/index\\_en.php](http://clc.ntcu.edu.tw/index_en.php)
- **Providence University**  
Chinese Language Education Center  
[clcc.pu.edu.tw](http://clcc.pu.edu.tw)
- **Tunghai University**  
Chinese Language Center  
[clc.thu.edu.tw](http://clc.thu.edu.tw)

### 9. Changhua

- **Chienkuo Technology University**  
Language Center  
[lc.ctu.edu.tw](http://lc.ctu.edu.tw)
- **National Changhua University of Education**  
Language Center  
[lc.ncue.edu.tw](http://lc.ncue.edu.tw)

### 10. Yunlin

### 11. Nantou

### 12. Chiayi

- **National Chiayi University**  
Language Center  
[140.130.204.81/English/Index.php](http://140.130.204.81/English/Index.php)

## SOUTH

### 13. Tainan

- **Kun Shan University**  
Chinese Language Center  
[www.ksu.edu.tw/english/DIT/INCL/MLC/](http://www.ksu.edu.tw/english/DIT/INCL/MLC/)

- **Nan Jeon University of Science and Technology**  
Chinese Language Center  
[www.nju.edu.tw/njclc](http://www.nju.edu.tw/njclc)
- **National Cheng Kung University**  
College of Liberal Arts, Chinese Language Center  
[kclc.ncku.edu.tw](http://kclc.ncku.edu.tw)
- **Southern Taiwan University of Science and Technology**  
Chinese Language Center  
[clc.stust.edu.tw/en](http://clc.stust.edu.tw/en)
- **Taiwan Shoufu University**  
Chinese Language Center  
[www.tsu.edu.tw/1alwebs/index.php?account=Clearn](http://www.tsu.edu.tw/1alwebs/index.php?account=Clearn)

### 14. Kaohsiung

- **I-Shou University**  
Language Center  
[www.isu.edu.tw/lc](http://www.isu.edu.tw/lc)
- **Kao Yuan University**  
Chinese Language Center  
[www.oia.kyu.edu.tw/clc/](http://www.oia.kyu.edu.tw/clc/)
- **National Kaohsiung Normal University**  
Center of Language and Culture Teaching  
[140.127.54.83/](http://140.127.54.83/)
- **National Sun Yat-sen University**  
Chinese Language Center  
[www2.nsysu.edu.tw/CLC](http://www2.nsysu.edu.tw/CLC)
- **National University of Kaohsiung**  
Division of Chinese Language, Language Center  
[www2.nuk.edu.tw/clc/](http://www2.nuk.edu.tw/clc/)
- **Wenzao Ursuline University of Languages**  
Chinese Language Center  
[c040.wtuc.edu.tw](http://c040.wtuc.edu.tw)

### 15. Pingtung

- **National Pingtung University**  
Language Center  
[lcc.nptu.edu.tw/bin/home.php](http://lcc.nptu.edu.tw/bin/home.php)
- **National Pingtung University of Science and Technology**  
Chinese Language Center  
[clc.npust.edu.tw](http://clc.npust.edu.tw)

## EAST

### 16. Hualien

- **Tzu Chi University**  
Center for Language Studies  
[www.language.tcu.edu.tw](http://www.language.tcu.edu.tw)

### 17. Taitung

## OFFSHORE ISLANDS

### 18. Penghu

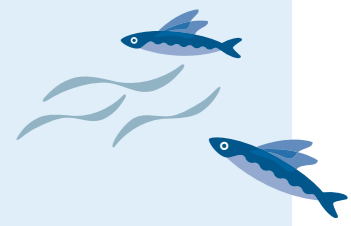
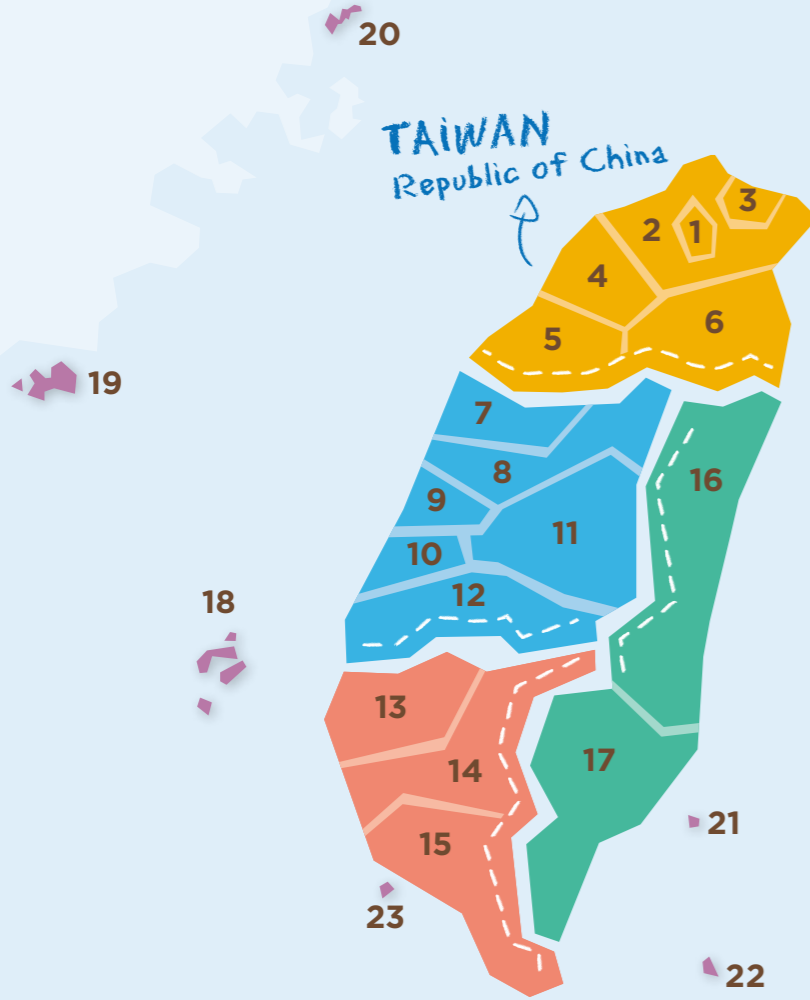
### 19. Kinmen

### 20. Matsu

### 21. Green Island

### 22. Lanyu

### 23. Little Liuqiu



# TEST OF CHINESE AS A FOREIGN LANGUAGE (TOCFL)

## Organization Introduction

The Steering Committee for the Test Of Proficiency-Huayu (SC-TOP) was established in November 2005 under the direction of the Ministry of Education of the R.O.C.. The Committee was originally called the Chinese Language Testing Center but was renamed in January 2007. The aim was to develop and then promote an effective Chinese assessment system for Chinese learners worldwide to assess their Chinese proficiency. The Test of Chinese as a Foreign Language (TOCFL) was developed to do this.

## Test Introduction

The Test of Chinese as a Foreign Language (TOCFL) is a standardized language proficiency test developed for non-native speakers of Chinese. It is the result of a joint project of the Mandarin Training Center, the Graduate Institute of Teaching Chinese as a Second Language, and the Psychological Testing Center of National Taiwan Normal University. The research project started in August 2001, and the tests started being conducted in 2003. It has already served test takers from over 60 countries. The current version of TOCFL began being developed in 2008 and became available in 2013.

The new version of the TOCFL has three proficiency bands: Band A, Band B, and Band C. Each of the bands has two levels, so there are a total of six levels: Levels 1 to 6. The tests for each level consist of 50 multiple choice items to be answered in 60 minutes. Test takers can choose the test level best suited to them based on their Chinese language proficiency and learning background.

Band A	
Learning Hours (in Taiwan)	120-360 hours
Learning Hours (in other places)	240-720 hours
Vocabulary Base	500 ~ 1,000 words
Band B	
Learning Hours (in Taiwan)	360-960 hours
Learning Hours (in other places)	720-1920 hours
Vocabulary Base	2,500 ~ 5,000 words
Band C	
Learning Hours (in Taiwan)	More than 960 hours
Learning Hours (in other places)	More than 1,920 hours
Vocabulary Base	8,000 words

Note: People learning Chinese overseas need double the total Chinese course hours required.

## Target Test Takers

TOCFL is designed for non-native speakers of Chinese. Those who wish to know their level of Chinese proficiency, or those who want to study, work or do business in Chinese speaking countries are welcome to take the test.

## Test Content

TOCFL tests incorporate extracts from authentic materials in daily life, such as advertisements, public announcements, notices, letters, memos, time schedules, and weather broadcasts. The diverse range of texts are from a variety of fields, including literature, science, art, geography, and history.

## Purpose of the TOCFL

TOCFL test takers who reach the level requirements will receive a certificate. The certificate can serve as a Chinese proficiency credential for:

- Applying for a Taiwan Scholarship
- Applying for an academic program at a college or university in Taiwan
- Evidence of Chinese subject proficiency for the University Entrance Committee for Overseas Chinese Students
- Serving as proof of Chinese language proficiency for employment purposes

A TOCFL certificate can be used as an official document when applying for admission to undergraduate and graduate programs in Taiwan, and many international businesses, such as LG, have adopted TOCFL as evidence of proficiency for their employee dispatch programs in Taiwan.

### TOCFL Testing in Taiwan

2015 TOCFL schedule  
[www.sc-top.org.tw/english/registration.php](http://www.sc-top.org.tw/english/registration.php)  
 Registration  
[reg.sc-top.org.tw](http://reg.sc-top.org.tw)



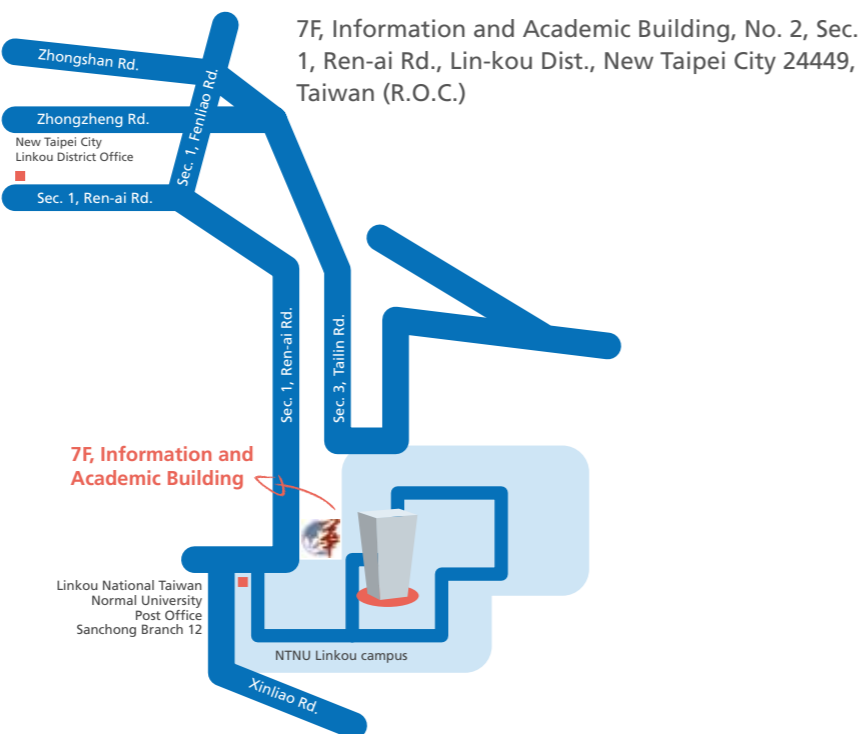
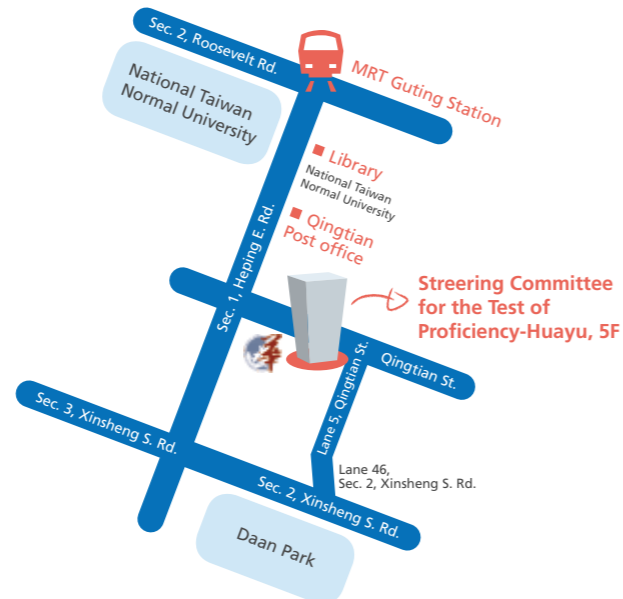
HOW CONVENIENT!!

## TOCFL Testing Overseas

SC-TOP started to provide overseas test services in 2006 to meet the demands of numerous international Chinese learners. Candidates can now choose to take the TOCFL tests in Japan, Korea, Thailand, Vietnam, Indonesia, Malaysia, the U.S.A., Canada, Paraguay, the U.K., France, Russia, Poland, and Australia, and SC-TOP plans to increase the number of test locations each year. For more information, please visit the website: [www.sc-top.org.tw](http://www.sc-top.org.tw)

## Contact SC-TOP

- Tel: +886-2-77345638
- Fax: +886-2-33432413
- E-mail: [service@sc-top.org.tw](mailto:service@sc-top.org.tw)
- Website: [www.sc-top.org.tw/](http://www.sc-top.org.tw/)
- Mailing Address: P.O. BOX 7-400 Taipei City 10699 Taiwan
- Location: 5F, No.6, Lane 5, Qingtian St., Da-an District, Taipei City, Taiwan (R.O.C.)



## FICHET: Your all-inclusive source of information about studying in Taiwan

FICHET - the Foundation for International Cooperation in Higher Education of Taiwan- is a non-profit organization of universities, founded in 2005. It currently has 116 member universities.

website: [www.fichet.org.tw](http://www.fichet.org.tw)  
E-mail: [fichet@fichet.org.tw](mailto:fichet@fichet.org.tw)